

BALDOR • RELIANCE

From industrial wastewater to fire suppression systems or commercial pools, Baldor•Reliance pump motors provide value by increasing reliability and reducing maintenance costs. Utilizing energy efficient designs, our pump motors meet NEMA Premium® efficiency and Inverter ready with wide variable torque speed ranges. Motor construction can be tailored for specific applications and industries such as food processing, washdown applications or explosion proof enclosures for pumps in hazardous areas.



Key Features:

- Baldor•Reliance motors meet or exceed all efficiency requirements for US, Canada and Mexico regulations
- Dynamically balanced rotor to reduce noise and increase bearing life
- Color coded and numbered leads for ease of connectivity

1/3 - 300 Horsepower

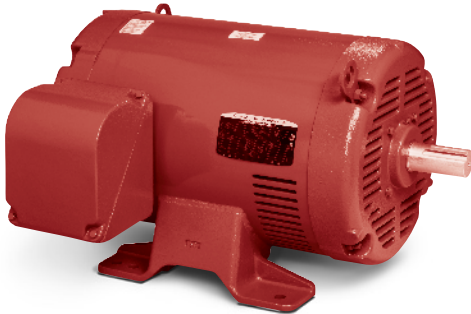
Pump Motor Product Line		Fire Pump	Jet Pump and Close-Coupled	Vertical P-Base	Submersible
NEMA Frame	Frame size range for stock products	210 - 440T	56 - 320T	180 - 360T	180 - 360T
Hp	Horse Power NEMA	10 - 300	1/3 - 50	3 - 75	1 - 100
Volts 60 Hz	Single Phase 115/208-230 or 115/230	-	S	-	S
	Three Phase 200 Volts	-	A	A	-
	Three Phase 200/400 Volts	S	A	A	-
	Three Phase 230/460 Volts	S	S	S	-
	Three Phase 460 Volts	S	A	A	S
	Three Phase 575 Volts	-	S	A	-
	Three Phase 230 Volts	-	A	A	S
Speed	Speed (60 Hz)	3600 or 1800 RPM	3600 or 1800 RPM	3600 or 1800 RPM	1800 or 1200 RPM
Electrical Features					
Efficiency	Baldor•Reliance motors meet or exceed all efficiency requirements for US, Canada & Mexico regulations	S	S	S	S
Torque	NEMA Design B Torques	S	S	S	S
Service Factor & Temp. Rise	1.15 Service Factor – Continuous (most ratings) Class F insulation with Class B rise @ 1.0 Service Factor	S	S	S	S
Inverter Ready	Super E® – meets NEMA MG1 Part 31.4.4.2 12 Lead Wye Delta connection	-	S	S	S
		-	-	S	S
Mechanical Features					
IP Code	IP22 Ingress Protection	S	S	S	-
	IP44 Ingress Protection	-	S	-	-
	IP54 Ingress Protection	-	A	-	-
	IP55 Ingress Protection	-	S	S	-
	IP56 Ingress Protection	-	S	-	-
	IP68 Ingress Protection	-	-	-	S
	IP69K Ingress Protection	-	S	-	-
Enclosure	Enclosure Type	ODP	ODP or TEFC	ODP or TEFC	TENV
Frame	Heavy Gauge Steel Frame	S	S	-	-
	Cast Iron frame	S	S	S	S
	Lifting provisions positioned for easy handling in the application (motors over 70 Lbs)	S	S	S	S
Explosion Proof	UL Listed for use in hazardous locations	-	S	-	S
Bearings	High performance Ball Bearings designs	S	S	S	S
Lubrication	Super-premium Mobil Polyrex™ EM Series Grease	S	S	S	S
Conduit Box	Color Coded and numbered leads for ease of connectivity	S	S	S	-
	Epoxy Encapsulated lead connections	-	-	-	S
	Gasketed Cast Aluminum	-	S	S	-
	Gasketed Cast Iron frame	-	S	S	-
	25 feet of cable	-	-	-	S
Nameplate	Laser etched nameplate with highly legible font	S	S	S	S
Other Key Features					
Warranty	Warranty # Months (NEMA Premium® Super-E®)	-	36	36	60
	Warranty # Months	12	18	-	-

S = Standard A = Available through Mod Express or as custom

For more information visit baldor.com

Fire Pump, Three Phase, ODP, Foot Mounted

10 thru 300 Hp



Features:

- 1.15 SF, 40°C ambient continuous
- NEMA Design B, 60 Hz
- 230/460 and 460 Volt models rated for 50 Hz at next lower Hp
- Dual voltage motors 20 Hp and larger have 12 leads, are suitable for wye-delta or across the line start on either voltage or part winding start on low voltage
- 460V motors have 12 leads and are suitable for wye-delta, across the line or part winding start
- UL file E481231
- Exterior red paint RAL3002

Applications:

- UL listed Fire Pump motors installed per NFPA-20

Hp	RPM	NEMA Frame	Catalog Number	List Price	Mult. Sym.	"C" Dim.	Aprx. Wt. (lb)	Full Load Efficiency	Voltage	Full Load Amps	Notes (a)
10	3600	213T	FPM3312T	1,322	FP	16.32	121	88.5	230/460	12	1
	1800	215T	FPM3313T	1,488	FP	16.32	115	89.5	230/460	13.4	1
15	3600	215T	FPM3314T	1,720	FP	16.32	131	89.5	230/460	17.7	1
	1800	254T	FPM2513T	1,967	FP	22.25	213	91	230/460	17.5	1
20	3600	254T	FPM2514T	2,051	FP	22.25	145	90.2	230/460	23	1
	1800	256T	FPM2515T	2,113	FP	21.69	225	91	230/460	24	1
25	3600	256T	FPM2516T	2,293	FP	21.69	210	91	230/460	29	1
		256T	FPM2516T-2/4	2,293	FP	21.69	210	91	200/400	34	1, 33
	1800	284TS	FPM2531TS	2,548	FP	23.56	236	91.7	230/460	29	1
		284TS	FPM2531TS-2/4	2,548	FP	23.56	236	91.7	200/400	34	1, 33
30	3600	284TS	FPM2534T	2,647	FP	22.06	235	91	230/460	35	1
		284TS	FPM2534T-2/4	2,647	FP	22.06	235	91	200/400	40	1, 33
	1800	286TS	FPM2535TS	3,162	FP	23.69	340	92.4	230/460	36	1
		286TS	FPM2535TS-2/4	3,162	FP	23.69	340	92.4	200/400	41	1, 33
40	3600	286TS	FPM2538T	3,363	FP	23.56	263	91.7	230/460	45	1
		286TS	FPM2538T-2/4	3,363	FP	23.56	263	91.7	200/400	52	1, 33
	1800	324TS	FPM2539TS	3,515	FP	24.69	375	93	230/460	49	1
		324TS	FPM2539TS-2/4	3,515	FP	24.69	375	93	200/400	56	1, 33
50	3600	324TS	FPM2542T	3,835	FP	24.69	331	92.4	230/460	58	1
		324TS	FPM2542T-2/4	3,835	FP	24.69	331	92.4	200/400	67	1, 33
	1800	326TS	FPM2543TS	3,882	FP	25.69	385	93	230/460	60	1
		326TS	FPM2543TS-2/4	3,882	FP	25.69	385	93	200/400	70	1, 33
60	3600	326TS	FPM2546T	4,677	FP	25.69	385	93	230/460	68	1
		326TS	FPM2546T-2/4	4,677	FP	25.69	385	93	200/400	78	1, 33
	1800	364TS	FPM2547TS	4,976	FP	25.81	480	93.6	230/460	72	1
		364TS	FPM2547TS-2/4	4,976	FP	25.81	480	93.6	200/400	83	1, 33
75	3600	364TS	FPM2549T	6,378	FP	25.81	485	93	230/460	84	1
		364TS	FPM2549T-2/4	6,378	FP	25.81	485	93	200/400	96	1, 33
	1800	365TS	FPM2551TS	5,598	FP	27.81	570	94.1	230/460	87	1
		365TS	FPM2551TS-2/4	5,598	FP	27.81	570	94.1	200/400	100	1, 33
100	3600	365TS	FPM2550T	6,922	FP	26.81	523	93	230/460	113	1
		365TS	FPM2550T-2/4	6,922	FP	26.81	523	93	200/400	130	1, 33
	1800	404TS	FPM2555TS	8,407	FP	31.85	597	94.1	230/460	117	1
125	404TS	FPM2555TS-2/4	8,407	FP	31.85	597	94.1	200/400	135	1, 33	
	3600	404TS	FPM2554T-4	9,635	FP	31.85	660	93.6	460	138	1
150	1800	405TS	FPM2559TS-4	9,919	FP	33.60	590	94.5	460	145	1
	3600	405TS	FPM2556T-4	11,830	FP	31.85	925	93.6	460	164	1
200	1800	444TS	FPM2558TS-4	11,560	FP	35.88	1579	95	460	167	
	3600	444TS	FPM2562T-4	15,174	FP	35.88	1449	94.5	460	232	
250	1800	445TS	FPM2563TS-4	14,220	FP	35.88	1718	95	460	224	
	3600	445TS	FPM2565T-4	15,975	FP	35.88	1737	94.5	460	288	
300	1800	445TS	FPM2566TS-4	16,184	FP	35.88	1844	95.4	460	272	
		445TS	FPM2568T-4	23,699	FP	35.88	1697	95	460	339	

(a) See notes on inside back flap. ■ Cast Iron Frame ■ Red Catalog Number indicates **NEW** Product.

Fire Pump, Three Phase, ODP, Footless, Close-Coupled Pump**10 thru 100 Hp****Features:**

- 1.15 SF, 40°C ambient continuous
- NEMA Design B, 60 Hz
- 230/460 Volt models rated for 50 Hz at next lower Hp
- Dual voltage motors 20 Hp and larger have 12 leads, are suitable for wye-delta or across the line start on either voltage or part winding start on low voltage
- Vertical lifting
- UL file E481231
- Exterior red paint RAL3002

Applications:

- UL listed Fire Pump motors installed per NFPA-20

Hp	RPM	NEMA Frame	Catalog Number	List Price	Mult. Sym.	"C" Dim.	Aprx. Wt. (lb)	Full Load Efficiency	Voltage	Full Load Amps	Notes (a)
10	3600	213JP	VJPFPM3312T	1,397	FP	24.41	121	88.5	230/460	12	1
		213JP	VJPFPM3312T-2/4	1,397	FP	24.41	121	88.5	200/400	12	1, 33
	1800	215JP	VJPFPM3313T	1,559	FP	24.41	117	89.5	230/460	13.4	1
15	3600	215JP	VJPFPM3314T	1,795	FP	24.41	131	89.5	230/460	17.7	1
		215JP	VJPFPM3314T-2/4	1,795	FP	24.41	131	89.5	200/400	20.4	1, 33
	1800	254JP	VJPFPM2513T	2,230	FP	28.07	220	91	230/460	17.5	1
20	3600	254JP	VJPFPM2514T	2,389	FP	27.66	145	90.2	230/460	23	1
		254JP	VJPFPM2514T-2/4	2,389	FP	27.66	145	90.2	200/400	26.5	1, 33
	1800	256JP	VJPFPM2515T	2,497	FP	28.07	231	91	230/460	24	1
25	3600	256JP	VJPFPM2516T	2,745	FP	28.07	221	91	230/460	29	1
		256JP	VJPFPM2516T-2/4	2,745	FP	28.07	221	91	200/400	34	1, 33
	1800	284JP	VJPFPM2531T	3,062	FP	31.44	272	91.7	230/460	29	1
30	3600	284JP	VJPFPM2534T	3,250	FP	29.23	235	91	230/460	35	1
		284JP	VJPFPM2534T-2/4	3,250	FP	29.23	235	91	200/400	40	1, 33
	1800	286JP	VJPFPM2535T	3,758	FP	29.25	375	92.4	230/460	36	1
40	3600	286JP	VJPFPM2538T	3,885	FP	31.44	263	91.7	230/460	45	1
		286JP	VJPFPM2538T-2/4	3,885	FP	31.44	263	91.7	200/400	52	1, 33
	1800	324JP	VJPFPM2539T	4,519	FP	31.13	375	93	230/460	49	1
50	3600	324JP	VJPFPM2542T	4,841	FP	31.13	331	92.4	230/460	58	1
		324JP	VJPFPM2542T-2/4	4,841	FP	31.13	331	92.4	200/400	67	1, 33
	1800	326JP	VJPFPM2543T	5,030	FP	32.13	378	93	230/460	60	1
60	3600	326JP	VJPFPM2546T	5,730	FP	32.13	385	93	230/460	68	1
		326JP	VJPFPM2546T-2/4	5,730	FP	32.13	385	93	200/400	78	1, 33
	1800	364JP	VJPFPM2547T	6,232	FP	32.50	480	93.6	230/460	72	1
75	3600	364JP	VJPFPM2549T	7,728	FP	32.50	472	93	230/460	84	1
		364JP	VJPFPM2549T-2/4	7,728	FP	32.50	472	93	200/400	96	1, 33
	1800	365JP	VJPFPM2551T	7,275	FP	34.50	565	94.1	230/460	87	1
100	3600	365JP	VJPFPM2550T	8,245	FP	33.50	523	93	230/460	113	1
		365JP	VJPFPM2550T-2/4	8,245	FP	33.50	523	93	200/400	130	1, 33

(a) See notes on inside back flap.

Red Catalog Number indicates **NEW** Product.

BALDOR • RELIANCE
Jet Pump, Single Phase, TEFC

Pump Motors

1/3 thru 2 Hp



Features:

- Automatic thermal overload protection
- Corrosion resistant stainless steel shaft extension
- Slotted opposite DE shaft for easy installation
- Superior switch design provides optimized torque profiles
- Dynamically balanced rotor to reduce noise and increase bearing life

Applications:

- Industrial Pumps
- Swimming Pool Pumps
- General Purpose Pumps
- Commercial Machinery
- Food and Beverage
- Wastewater
- Agricultural

Hp	RPM	NEMA Frame	Catalog Number	List Price	Mult. Sym.	"C" Dim.	Aprx. Wt. (lb)	Full Load Efficiency	Voltage	Full Load Amps	Notes (a)
Foot Mounted											
1/3	1800	56J	CJL3501A	423	K	11.84	23	60	115/230	3	30
1/2	1800	56J	CJL3504A	498	K	12.47	28	68	115/230	3.7	30
3/4	1800	56J	CJL3507A	607	K	12.97	35	74	115/230	4.1	30
1	3600	56J	CJL3509A	614	K	13.74	39	66	115/230	6	30
1.5	3600	56J	CJL3513A	675	K	13.74	47	70	115/230	8.3	30
2	3600	56J	CJL3515A	793	K	14.62	51	74	115/230	11.5	30
Footless											
1/3	3600	56J	JL3405A	313	K	11.85	19	60	115/230	3	30
	1800	56J	JL3501A	391	K	11.85	22	60	115/230	3	30
1/2	3600	56J	JL3503A	359	K	12.85	26	62	115/230	3.7	30
	1800	56J	JL3504A	454	K	12.85	27	68	115/230	3.7	30
3/4	3600	56J	JL3506A	427	K	12.85	29	66	115/230	5.4	30
	1800	56J	JL3507A	539	K	12.97	33	74	115/230	4.1	30
1	3600	56J	JL3509A	522	K	13.74	42	66	115/230	6	30
	1800	56J	JL3510A	619	K	13.74	40	67	115/230	6.2	30
1 1/2	3600	56J	JL3513A	619	K	13.74	45	70	115/230	8.3	30
	1800	56J	JL3514A	679	K	14.62	51	75.5	115/230	8	30
2	3600	56J	JL3515A	727	K	14.62	54	74	115/230	11.5	30
	1800	56J	JL3516A	773	K	14.62	52	78	115/230	8.6	20, 30

(a) See notes on inside back flap.

All threaded shaft, single phase motors are connected single rotation - CCW when viewing drive end.

ALL ABOVE RATINGS CAN BE UL 1081 COMPLIANT THROUGH MOD EXPRESS. SEE M30A IN THE MOD EXPRESS PROGRAM SECTION OF THIS CATALOG FOR MORE DETAILS.

General Information

Single Phase Motors

General Purpose Industrial Motors

Severe Duty Motors

Large AC Motors

Washdown Duty Motors

Explosion Proof Motors

Pump Motors

HVAC Motors

Farm Duty Motors

Jet Pump, Single Phase, ODP

1/3 thru 3 Hp



Features:

- Automatic thermal overload protection
- Corrosion resistant stainless steel shaft extension
- Slotted opposite DE shaft for easy installation
- Superior switch design provides optimized torque profiles
- Optimized airflow design providing higher horsepower in a smaller package

Applications:

- Industrial Pumps
- Swimming Pool Pumps
- General Purpose Pumps
- Commercial Machinery
- Food and Beverage
- Wastewater
- Agricultural

Hp	RPM	NEMA Frame	Catalog Number	List Price	Mult. Sym.	"C" Dim.	Aprx. Wt. (lb)	Full Load Efficiency	Voltage	Full Load Amps	Notes (a)
Foot Mounted											
1/3	3600	56J	CJL1205A	308	K	11.91	23	58	115/230	3.1	
	1800	56J	CJL1301A	462	K	11.89	23	60	115/208-230	3	30
1/2	3600	56J	CJL1303A	320	K	12.51	30	66	115/230	3.7	
	1800	56J	CJL1304A	522	K	12.14	25	62	115/230	4.2	30
3/4	3600	56J	CJL1306A	408	K	13.39	30	69	115/230	5.5	
	1800	56J	CJL1307A	599	K	12.25	35	63	115/230	5.4	
1	3600	56J	CJL1309A	418	K	13.89	32	65	115/208-230	7	30
1 1/2	3600	56J	CJL1313A	580	K	13.89	37	78.5	115/230	6.5	
2	3600	56J	CJL1317A	776	K	13.25	45	70	115/230	13	30
Footless											
1/3	3600	56J	JL1205A	270	K	11.89	25	58	115/230	3.1	
	1800	56J	JL1301A	311	K	11.89	23	60	115/230	3	30
1/2	3600	56J	JL1303A	304	K	12.51	26	66	115/230	3.7	
	1800	56J	JL1304A	366	K	12.14	25	62	115/230	4.2	30
3/4	3600	56J	JL1306A	400	K	13.39	33	69	115/230	5.5	
	1800	56J	JL1307A	462	K	13.89	33	68	115/230	5.1	30
1	3600	56J	JL1309A	414	K	13.89	32	65	115/230	7	30
1 1/2	3600	56J	JL1313A	578	K	13.89	36	78.5	115/230	6.5	
2	3600	56J	JL1317A	713	K	13.25	45	70	115/230	13	30
3	3600	56J	JL1323A	732	K	14.13	52	82.5	230	13	30

(a) See notes on inside back flap.

All threaded shaft, single phase motors are connected single rotation - CCW when viewing drive end.

ALL ABOVE RATINGS CAN BE UL 1081 COMPLIANT THROUGH MOD EXPRESS. SEE M30A IN THE MOD EXPRESS PROGRAM SECTION OF THIS CATALOG FOR MORE DETAILS.

General Information

Single Phase Motors

General Purpose Industrial Motors

Severe Duty Motors

Large AC Motors

Washdown Duty Motors

Explosion Proof Motors

Pump Motors

HVAC Motors

Farm Duty Motors

BALDOR • RELIANCE
Jet Pump, Three Phase, TEFC

Pump Motors

1/3 thru 3 Hp



Features:

- Corrosion resistant stainless steel shaft extension
- Slotted opposite DE shaft for easy installation
- Dynamically balanced rotor to reduce noise and increase bearing life

Applications:

- Industrial Pumps
- Swimming Pool Pumps
- General Purpose Pumps
- Commercial Machinery
- Food and Beverage
- Wastewater
- Agricultural

Hp	RPM	NEMA Frame	Catalog Number	List Price	Mult. Sym.	"C" Dim.	Aprx. Wt. (lb)	Full Load Efficiency	Voltage	Full Load Amps	Notes (a)
Footless											
1/3	3600	56J	JM3457	351	K	11.84	19	62	230/460	0.8	30
	1800	56J	JM3458	380	K	11.84	21	68	230/460	0.8	30
1/2	3600	56J	JM3460	380	K	11.84	21	70	230/460	1.2	30
	1800	56J	JM3461	448	K	11.84	23	74	230/460	1	30
3/4	3600	56J	JM3463	416	K	11.84	23	74	208-230/460	1.5	
	1800	56J	JM3542	484	K	11.84	26	75.5	208-230/460	1.5	
1	3600	56J	EJM3545	651	K	12.47	27	77	230/460	1.6	30
	1800	56J	EJM3546	748	K	13.74	37	85.5	230/460	1.7	30
1 1/2	3600	56J	EJM3550	736	K	12.72	38	84	230/460	1.9	30
		56J	JM3550	514	K	12.47	29	80	230/460	2.3	1, 16, 30
	1800	56J	EJM3554	830	K	13.74	41	86.5	230/460	2.3	1, 30
2	3600	56J	EJM3555	805	K	13.74	41	85.5	230/460	2.5	30
		56J	JM3555	651	K	13.74	41	80	230/460	2.7	16, 30
	1800	56J	EJM3558	877	K	14.62	48	86.5	230/460	2.9	1, 30
3	3600	56J	EJM3559	881	K	14.62	50	86.5	230/460	3.6	1, 30
		56J	JM3559	707	K	13.74	44	82.5	208-230/460	3.8	1, 16
Foot Mounted											
1/2	1800	56J	CJM3538	475	K	11.84	23	74	230/460	1	30
3/4	1800	56J	CJM3542	503	K	11.84	25	75.5	208-230/460	1.5	

(a) See notes on inside back flap.

Red Catalog Number indicates **NEW** Product.

ALL ABOVE RATINGS CAN BE UL 1081 COMPLIANT THROUGH MOD EXPRESS. SEE M30A IN THE MOD EXPRESS PROGRAM SECTION OF THIS CATALOG FOR MORE DETAILS.

Jet Pump, Three Phase, ODP**1/3 thru 3 Hp****Features:**

- Corrosion resistant stainless steel shaft extension
- Slotted opposite DE shaft for easy installation
- Dynamically balanced rotor to reduce noise and increase bearing life
- Optimized airflow design providing higher horsepower in a smaller package

Applications:

- Industrial Pumps
- Swimming Pool Pumps
- General Purpose Pumps
- Commercial Machinery
- Food and Beverage
- Wastewater
- Agricultural

Hp	RPM	NEMA Frame	Catalog Number	List Price	Mult. Sym.	"C" Dim.	Aprx. Wt. (lb)	Full Load Efficiency	Voltage	Full Load Amps	Notes (a)
Footless											
1/3	3600	56J	JM3006	320	K	11.72	19	62	230/460	0.8	30
1/2	3600	56J	JM3107	338	K	11.72	21	70	230/460	1.2	30
	1800	56J	JM3108	404	K	11.85	23	74	230/460	1	30
3/4	3600	56J	JM3111	401	K	11.72	23	74	208-230/460	1.5	
	1800	56J	JM3112	446	K	12.34	27	75.5	208-230/460	1.5	
1	3600	56J	JM3115	446	K	12.34	32	77	230/460	1.6	30
	1800	56J	JM3116	489	K	13.22	30	78.5	208-230/460	1.7	1
1 1/2	3600	56J	JM3120	532	K	13.22	30	74	230/460	2.2	30
	1800	56J	JM3154	582	K	13.72	34	77	208-230/460	2.8	
2	3600	56J	JM3155	632	K	13.72	35	82.5	230/460	2.7	30
3	3600	56J	JM3158	750	K	13.72	42	80	208-230/460	4	
Foot Mounted											
1/3	1800	56J	CJM3104	383	K	11.85	22	68	230/460	0.8	30
1/2	3600	56J	CJM3107	351	K	11.72	22	70	230/460	1.2	30
	1800	56J	CJM3108	428	K	11.72	24	74	230/460	1	30
3/4	3600	56J	CJM3111	401	K	11.72	28	74	208-230/460	1.5	
	1800	56J	CJM3112	459	K	12.34	27	75.5	208-230/460	1.5	
1	3600	56J	CJM3115	448	K	12.34	29	77	230/460	1.6	30
1 1/2	3600	56J	CJM3120	546	K	13.22	31	81.5	230/460	2	30
2	3600	56J	CJM3155	649	K	13.72	34	82.5	230/460	2.7	30
3	3600	56J	CJM3158	768	K	13.74	41	80	208-230/460	4	

(a) See notes on inside back flap.

ALL ABOVE RATINGS CAN BE UL 1081 COMPLIANT THROUGH MOD EXPRESS. SEE M30A IN THE MOD EXPRESS PROGRAM SECTION OF THIS CATALOG FOR MORE DETAILS.

Washdown, Jet Pump, Three Phase, TEFC, C-Face

3/4 thru 3 Hp

IP55

General Information

Single Phase Motors

General Purpose Industrial Motors

Severe Duty Motors

Large AC Motors

Washdown Duty Motors

Explosion Proof Motors

Pump Motors

HVAC Motors

Farm Duty Motors



Features:

- 300 series stainless steel hardware and shaft extension
- Footless
- Neoprene gaskets
- Double sealed ball bearings
- Lip and V-Ring seal on DE
- Electrostatically applied epoxy finish
- Easy removable drain plugs

Applications:

- Food Processing
- Wet environment
- Pumps and Wastewater

Hp	RPM	NEMA Frame	Catalog Number	List Price	Mult. Sym.	“C” Dim.	Aprx. Wt. (lb)	Full Load Efficiency	Voltage	Full Load Amps	Notes (a)
Footless											
3/4	3600	56J	JWDM3463	634	WD	12.73	33	68	208-230/460	1.4	1
1	3600	56J	JEWDM3545	1,001	WD	12.73	38	78.5	230/460	1.6	1, 30
1 1/2	3600	56J	JEWDM3550	1,058	WD	13.73	41	84	230/460	2	1, 30
2	3600	56J	JEWDM3555	1,175	WD	13.73	41	85.5	230/460	2.5	1
3	3600	56J	JEWDM3559	1,393	WD	14.99	64	87.5	230/460	3.5	1, 30
Foot Mounted											
3/4	3600	56J	CJWDM3463	639	WD	12.72	33	68	208-230/460	1.4	1
1	3600	56J	CJEWDM3545	1,006	WD	12.72	38	78.5	230/460	1.6	1, 30
1 1/2	3600	56J	CJEWDM3550	1,063	WD	13.72	41	84	230/460	2	1, 30
2	3600	56J	CJEWDM3555	1,180	WD	13.73	41	85.5	230/460	2.5	1
3	3600	56J	CJEWDM3559	1,398	WD	14.99	64	87.5	230/460	3.5	1, 30

(a) See notes on inside back flap.

Red Catalog Number indicates **NEW** Product.

Square Flange Pump, ODP

1/2 thru 2 Hp



Features:

- Corrosion resistant stainless steel shaft extension
- Dynamically balanced rotor to reduce noise and increase bearing life
- Heavy gauge steel design
- Safeguard drip cover

Applications:

- Square Flange Pumps
- Swimming Pool Pumps
- General Purpose Pumps
- Commercial Machinery
- Food and Beverage
- Wastewater
- Agricultural

Hp	RPM	NEMA Frame	Catalog Number	List Price	Mult. Sym.	“C” Dim.	Aprx. Wt. (lb)	Full Load Efficiency	Voltage	Full Load Amps	Notes (a)
Single Phase											
1/2	3600	56Y	JSL325A	376	K	11.35	24	70	115/230	3.3	30
3/4	3600	56Y	JSL425A	399	K	11.97	26	62	115/230	5.1	30
1	3600	56Y	JSL525A	426	K	12.72	30	70	115/230	6.3	30
1 1/2	3600	56YZ	JSL625A	580	K	14.44	42	72	115/230	9	30
2	3600	56YZ	JSL725A	582	K	14.44	47	74	115/230	11	30
Three Phase											
1/2	3600	56YZ	JSM3107	338	K	11.40	21	70	230/460	1.2	30
3/4	3600	56YZ	JSM3111	400	K	11.40	24	74	208-230/460	1.5	
1	3600	56YZ	JSM3115	443	K	12.02	27	77	230/460	1.6	30
1 1/2	3600	56YZ	JSM3120	528	K	12.77	31	81.5	230/460	2	30
2	3600	56YZ	JSM3155	625	K	13.40	35	82.5	230/460	2.7	30

(a) See notes on inside back flap.

Close-Coupled Pump, Single Phase**3 thru 10 Hp****Features:**

- Oversize ball bearings for the pump industry
- Locked DE bearing to allow mounting in any configuration
- Dynamically balanced rotor to reduce noise and increase bearing life
- Superior switch design provides optimized torque profiles

Applications:

- Industrial Pumps
- General Purpose Pumps
- Food and Beverage
- Wastewater
- Agricultural
- Aggregate
- Cement

Hp	RPM	NEMA Frame	Catalog Number	List Price	Mult. Sym.	"C" Dim.	Aprx. Wt. (lb)	Full Load Efficiency	Voltage	Full Load Amps	Notes (a)
Totally Enclosed Fan Cooled, Mechanical Seal, Type JM											
3	3600	182JM	JML3606T	1,035	L1	18.06	79	76	115/230	14.5	1, 30
5	3600	184JM	JML3608T	1,379	L1	19.55	93	83	230	19.5	2, 20
Open Drip Proof, Mechanical Seal, Type JM											
3	3600	182JM	JML1406T	987	L1	16.50	69	78	115/208-230	14	
	1800	184JM	JML1408T	1,132	L1	16.50	80	78	115/230	16	30
5	3600	184JM	JML1409T	1,394	L1	16.50	81	80	230	21.5	1, 30
	1800	213JM	JML1508T	1,606	L1	18.19	115	77	230	27	
7 1/2	3600	213JM	JML1509T	2,000	L1	18.19	116	81	230	37	30
	1800	215JM	JML1510T	2,115	L1	19.31	142	85.5	230	31	30
10	3600	215JM	JML1511T	2,459	L1	19.31	141	83	230	46	20, 30
	1800	215JM	JML1512T	2,618	L1	20.95	150	84	230	41	20, 30
Open Drip Proof, Packed Pump, Type JP											
3	3600	182JP	JPL1406T	987	L1	19.57	76	78	115/230	14	30
	1800	184JP	JPL1408T	1,132	L1	19.57	87	78	115/230	16	30
5	3600	184JP	JPL1409T	1,394	L1	19.57	88	80	230	21.5	1, 30
	1800	213JP	JPL1508T	1,606	L1	22.07	117	77	230	27	
7 1/2	3600	213JP	JPL1509T	2,000	L1	22.07	121	81	230	37	30
	1800	215JP	JPL1510T	2,115	L1	23.19	143	85.5	230	31	30
10	3600	215JP	JPL1511T	2,459	L1	23.19	148	83	230	46	20, 30
	1800	215JP	JPL1512T	2,618	L1	20.95	142	84	230	41	20, 30
Open Drip Proof, West Coast Fit, Type TCZ											
3	3600	182TCZ	WCL1406T	994	L1	19.69	81	78	115/230	14	30
	1800	184TCZ	WCL1408T	1,140	L1	19.69	91	78	115/230	16	30
5	3600	184TCZ	WCL1409T	1,407	L1	19.69	91	75	230	23	1, 30
	1800	213TCZ	WCL1508T	1,620	L1	21.25	116	77	230	27	
7 1/2	3600	213TCZ	WCL1509T	2,013	L1	21.25	117	81	230	37	30
10	3600	215TCZ	WCL1511T	2,482	L1	22.38	143	83	230	46	20, 30

(a) See notes on inside back flap.

Close-Coupled Pump, Three Phase, Foot Mounted, With Internal Aegis® Bearing Protection Ring

1 thru 20 Hp



Features:

- Internal grounding brush for bearing current mitigation on DE retainer ring
- Class H insulation for increased protection on Inverter use
- Oversize ball bearings for the pump industry
- Locked DE bearing to allow mounting in any configuration
- Designed for longevity with a 3 year warranty on premium efficient Super-E® Motors
- Suitable for Inverter use per NEMA MG1 Part 31.4.4.2

Applications:

- Commercial pumps
- Pairing with a Speed Drive
- General Purpose Pumps
- Industrial Pumps
- Food and Beverage
- Agricultural

Hp	RPM	NEMA Frame	Catalog Number	List Price	Mult. Sym.	"C" Dim.	Aprx. Wt. (lb)	Full Load Efficiency	Voltage	Full Load Amps	Notes (a)
Totally Enclosed Fan Cooled											
3	3600	182JM	EJMM3610T-G	1,157	L1	16.91	60	86.5	230/460	3.6	30
	1800	182JM	EJMM3611T-G	1,252	L1	18.06	76	89.5	230/460	4.2	30
5	3600	184JM	EJMM3613T-G	1,333	L1	18.06	81	88.5	230/460	5.9	30
	1800	184JM	EJMM3615T-G	1,255	L1	19.56	93	89.5	230/460	6.7	30
7 1/2	3600	213JM	EJMM3709T-G	1,735	L1	19.76	124	89.5	230/460	9	30
	1800	213JM	EJMM3710T-G	1,854	L1	20.89	134	91.7	230/460	9.4	30
10	3600	215JM	EJMM3711T-G	1,953	L1	19.76	124	90.2	230/460	11.8	30
	1800	215JM	EJMM3714T-G	2,133	L1	22.38	165	91.7	230/460	12	30
15	3600	254JM	EJMM2394T-G	3,384	L1	25.30	260	91	230/460	17.5	30
	1800	254JM	EJMM2333T-G	3,357	L1	25.30	265	92.4	230/460	18.1	30
20	3600	256JM	EJMM4106T-G	3,697	L1	25.30	274	91	230/460	23	30
	1800	256JM	EJMM2334T-G	3,750	L1	25.30	308	93	230/460	24	30
Open Drip Proof											
1	1800	143JM	EJMM3116T-G	873	L1	13.75	37	85.5	230/460	1.5	30
1 1/2	1800	145JM	EJMM3154T-G	931	L1	13.75	41	86.5	230/460	2.2	30
2	1800	145JM	EJMM3157T-G	1,003	L1	14.25	44	86.5	230/460	2.9	30
3	3600	145JM	EJMM3158T-G	1,116	L1	15.13	51	85.5	230/460	3.8	30
	1800	182JM	EJMM3211T-G	1,134	L1	16.50	74	89.5	230/460	4.2	30
5	3600	182JM	EJMM3212T-G	1,340	L1	15.12	64	86.5	230/460	6	30
	1800	184JM	EJMM3218T-G	1,255	L1	18.00	88	89.5	230/460	6.6	30
7 1/2	3600	184JM	EJMM3219T-G	1,546	L1	16.50	78	88.5	230/460	8.6	30
	1800	213JM	EJMM3311T-G	1,831	L1	18.19	120	91	230/460	9.7	30
10	3600	213JM	EJMM3312T-G	1,984	L1	18.19	121	89.5	230/460	12	30
	1800	215JM	EJMM3313T-G	1,959	L1	19.31	132	91.7	230/460	12.5	30
15	3600	215JM	EJMM3314T-G	2,479	L1	18.19	134	90.2	230/460	17.5	30
	1800	254JM	EJMM2513T-G	2,804	L1	23.19	213	93	230/460	17.7	30

(a) See notes on inside back flap.

■ Cast Iron Frame

Close-Coupled Pump, Three Phase, TEFC

1 thru 50 Hp



Features:

- Oversize ball bearings for the pump industry
- Locked DE bearing to allow mounting in any configuration
- Designed for longevity with a 3 year warranty on premium efficient Super-E® Motors
- Suitable for Inverter use per NEMA MG1 Part 31.4.4.2

Applications:

- General Purpose Pumps
- Industrial Applications
- Commercial Pumps
- Food and Beverage
- Wastewater
- Agricultural
- Aggregate

Hp	RPM	NEMA Frame	Catalog Number	List Price	Mult. Sym.	"C" Dim.	Aprx. Wt. (lb)	Full Load Efficiency	Voltage	Full Load Amps	Notes (a)
230/460 Volts											
1	1800	143JM	EJMM3546T	827	L1	15.43	40	85.5	230/460	1.5	1, 30
		143JM	JMM3546T	657	L1	15.43	39	82.5	208-230/460	1.6	1, 16
1 1/2	3600	143JM	EJMM3550T	822	L1	15.43	47	84	230/460	1.9	1, 30
	1800	145JM	EJMM3554T	881	L1	15.43	44	86.5	230/460	2.2	1, 30
		145JP	EJPM3554T	971	L1	18.50	41	86.5	230/460	2.2	1, 30
		145JM	JMM3554T	690	L1	15.43	43	84	208-230/460	2.4	1, 16
		145JP	JPM3554T	690	L1	18.50	44	84	208-230/460	2.4	1, 16
2	3600	145JM	EJMM3555T	882	L1	15.43	47	85.5	230/460	2.5	1, 30
		145JP	EJPM3555T	946	L1	18.49	41	85.5	230/460	2.5	1, 30
		145JM	JMM3555T	769	L1	15.43	47	84	208-230/460	2.6	1, 16
	1800	145JM	EJMM3558T	900	L1	15.43	50	86.5	230/460	2.9	1, 30
		145JP	EJPM3558T	1,018	L1	19.37	48	86.5	230/460	2.9	1, 30
		145JM	JMM3558T	721	L1	15.43	46	84	208-230/460	3.1	1, 16
3	3600	145JM	EJMM3559T	947	L1	16.31	54	86.5	230/460	3.6	1, 30
		145JP	EJPM3559T	1,022	L1	19.37	50	86.5	230/460	3.6	1, 30
		145JM	JMM3559T	862	L1	16.31	53	85.5	208-230/460	3.7	1, 16
		182JM	EJMM3610T	949	L1	16.81	56	86.5	230/460	3.6	1, 30
		182JP	EJPM3610T	1,138	L1	19.87	50	86.5	230/460	3.6	1, 30
	1800	182JM	JMM3610T	894	L1	16.84	56	85.5	208-230/460	3.7	1, 16
		182JP	JPM3610T	894	L1	19.87	58	85.5	208-230/460	3.7	1, 16
		182JM	EJMM3611T	1,044	L1	18.06	76	89.5	230/460	4.2	1, 30
		182JP	EJPM3611T	1,146	L1	21.11	70	89.5	230/460	4.2	1, 30
		182JM	JMM3611T	862	L1	18.18	66	87.5	208-230/460	4.2	1, 16
5	3600	182JP	JPM3611T	862	L1	21.28	67	87.5	208-230/460	4.2	1, 16
		184JM	EJMM3613T	1,125	L1	18.06	79	88.5	230/460	5.9	1, 30
		184JP	EJPM3613T	1,234	L1	21.11	81	88.5	230/460	5.6	1, 30
		184JM	JMM3613T	1,104	L1	18.06	74	87.5	208-230/460	5.8	1, 16
	1800	184JP	JPM3613T	1,104	L1	21.43	77	87.5	208-230/460	5.8	1, 16
		184JM	EJMM3615T	1,047	L1	19.56	93	89.5	230/460	6.7	1, 30
		184JP	EJPM3615T	1,175	L1	22.61	96	89.5	230/460	6.9	1, 30
		184JM	JMM3615T	964	L1	19.56	85	87.5	208-230/460	6.8	1, 16
		184JP	JPM3615T	964	L1	22.93	88	87.5	208-230/460	6.8	1, 16
		184JM	EJMM3616T	1,392	L1	19.56	101	89.5	230/460	8.4	1, 30
7 1/2	3600	184JP	EJPM3616T	1,546	L1	22.61	96	89.5	230/460	9.7	1, 30
		184JM	JMM3616T	1,249	L1	19.56	91	88.5	208-230/460	8.7	1, 16
		184JP	JPM3616T	1,249	L1	22.93	93	88.5	208-230/460	8.7	1, 16
		213JM	EJMM3709T	1,474	L1	19.76	125	89.5	230/460	9	1, 30
		213JP	EJPM3709T	1,799	L1	23.64	121	89.5	230/460	9	1, 30
		213TCZ	EWCM3709T	1,764	L1	23.45	96	89.5	230/460	9.7	1, 30
	1800	213JM	JMM3709T	1,407	L1	20.40	98	88.5	208-230/460	8.7	1, 16
		213TCZ	WCM3709T	1,374	L1	23.45	100	88.5	208-230/460	8.7	1, 16
		213JM	EJMM3710T	1,593	L1	20.88	134	91.7	230/460	9.4	1, 30
		213JP	EJPM3710T	1,660	L1	24.79	129	91.7	230/460	10.7	1, 30
		213TCZ	EWCM3710T	1,625	L1	23.95	129	91.7	230/460	10.7	1, 30
		213JM	JMM3710T	1,233	L1	19.76	125	89.5	208-230/460	10.1	1, 16

(a) See notes on inside back flap. Cast Iron Frame
 Red Catalog Number indicates **NEW** Product.

Close-Coupled Pump, Three Phase, TEFC

Hp	RPM	NEMA Frame	Catalog Number	List Price	Mult. Sym.	"C" Dim.	Aprx. Wt. (lb)	Full Load Efficiency	Voltage	Full Load Amps	Notes (a)
10	3600	215JM	EJMM3711T	1,692	L1	19.76	130	90.2	230/460	11.8	1, 30
		215JP	EJPM3711T	1,819	L1	23.64	118	90.2	230/460	11.8	1, 30
		215TCZ	EWCM3711T	1,784	L1	22.82	118	90.2	230/460	11.8	1, 30
		215JP	JPM3711T	1,682	L1	23.64	128	89.5	208-230/460	12	16, 20
		215TCZ	WCM3711T	1,644	L1	22.82	126	89.5	208-230/460	12	16, 20
	1800	215JM	EJMM3714T	1,872	L1	22.39	165	91.7	230/460	12	1, 30
		215JP	EJPM3714T	1,872	L1	26.29	165	91.7	230/460	12	1, 30
		215TCZ	EWCM3714T	1,796	L1	25.45	187	91.7	230/460	12.6	1, 30
		215JM	JMM3714T	1,556	L1	20.88	137	89.5	208-230/460	13.5	1, 16
		215JP	JPM3714T	1,556	L1	24.79	146	89.5	208-230/460	13.5	1, 16
15	3600	215TCZ	WCM3714T	1,522	L1	23.95	136	89.5	208-230/460	13.5	1, 16
		215JM	EJMM3713T	2,549	L1	22.39	169	91	230/460	17	1, 30
		215JP	EJPM3713T	2,429	L1	26.29	169	91	230/460	17	1, 30
		215TCZ	EWCM3713T	2,394	L1	25.45	169	91	230/460	17	1, 30
		215JM	JMM3713T	2,216	L1	21.64	160	90.2	208-230/460	17.3	16, 20
	1800	215JP	JPM3713T	2,216	L1	25.54	160	90.2	208-230/460	17.3	16, 20
		215TCZ	WCM3713T	1,960	L1	24.70	160	90.2	208-230/460	17.3	16, 20
		254JM	EJMM2394T	3,091	L1	25.30	257	91	230/460	17.5	1, 30
		254JP	EJPM2394T	3,091	L1	28.16	260	91	230/460	17.8	1, 30
		254JM	JMM2394T	2,915	L1	23.07	225	90.2	208-230/460	17.2	1, 16
3600	254JP	JPM2394T	2,915	L1	25.95	225	90.2	208-230/460	17.2	1, 16	
	254JM	EJMM2333T	3,064	L1	25.30	265	92.4	230/460	18.5	1, 30	
	254JP	EJPM2333T	3,064	L1	28.16	265	92.4	230/460	18.5	1, 30	
	254JM	JMM2333T	2,842	L1	23.07	236	91	208-230/460	18.5	1, 16	
	254JP	JPM2333T	2,842	L1	25.95	236	91	208-230/460	18.5	1, 16	
20	3600	256JM	EJMM4106T	3,404	L1	25.30	281	91	230/460	23	1, 30
		256JP	EJPM4106T	3,404	L1	28.16	264	91	230/460	23	1, 30
		256JM	JMM4106T	3,208	L1	24.83	255	90.2	208-230/460	23	1, 16
		256JP	JPM4106T	3,208	L1	27.70	255	90.2	208-230/460	23	1, 16
		256JM	EJMM2334T	3,457	L1	25.30	304	93	230/460	24	1, 30
	1800	256JP	EJPM2334T	3,457	L1	28.16	300	93	230/460	24	1, 30
		256JM	JMM2334T	3,009	L1	24.82	245	91	230/460	25	16, 20, 30
		256JP	JPM2334T	3,009	L1	27.70	245	91	230/460	25	16, 20, 30
		284JM	EJMM4107T	3,955	L1	26.96	353	91.7	230/460	29	20, 30
		284JP	EJPM4107T	3,955	L1	29.84	349	91.7	230/460	29	20, 30
25	3600	284JM	JMM4107T	3,603	L1	26.96	342	91	230/460	28	1, 16, 30
		284JP	JPM4107T	3,603	L1	29.84	333	91	230/460	28	1, 16, 30
		284JM	EJMM4103T	4,097	L1	28.64	387	93.6	230/460	30	1, 30
	1800	284JP	EJPM4103T	4,097	L1	31.51	412	93.6	230/460	30	1, 30
		284JM	JMM4103T	3,516	L1	26.96	366	92.4	230/460	30	1, 16, 30
		284JP	JPM4103T	3,516	L1	29.84	356	92.4	230/460	30	1, 16, 30
30	3600	286JM	EJMM4108T	5,439	L1	28.64	406	91.7	230/460	33	1, 30
		286JP	EJPM4108T	5,439	L1	31.51	405	91.7	230/460	35	1, 30
		286JM	JMM4108T	4,716	L1	26.96	370	91	230/460	34	1, 16, 30
		286JP	JPM4108T	4,716	L1	29.84	359	91	208-230/460	34	1, 16
	1800	286JM	EJMM4104T	4,854	L1	28.64	422	93.6	230/460	36	1, 30
		286JP	EJPM4104T	4,854	L1	31.51	452	93.6	230/460	36	1, 30
		286JM	JMM4104T	4,333	L1	26.96	382	92.4	230/460	36	1, 16, 30
		286JP	JPM4104T	4,333	L1	29.84	386	92.4	230/460	36	1, 16, 30
40	3600	324JM	EJMM4109T	6,159	L1	30.64	487	92.4	230/460	45	1, 30
		324JP	EJPM4109T	6,159	L1	33.51	498	92.4	230/460	45	1, 30
		324JM	JMM4109T	5,661	L1	30.64	460	91.7	230/460	45	1, 16, 30
		324JP	JPM4109T	5,661	L1	33.51	468	91.7	230/460	45	1, 16, 30
	1800	324JM	EJMM4110T	6,310	L1	30.65	586	94.1	230/460	48	1, 30
		324JP	EJPM4110T	6,310	L1	33.41	602	94.1	230/460	48	1, 30
		324JM	JMM4110T	5,456	L1	30.64	486	93	230/460	47	1, 16, 30
		324JP	JPM4110T	5,456	L1	33.51	496	93	230/460	47	1, 16, 30

(a) See notes on inside back flap.

Cast Iron Frame

Red Catalog Number indicates **NEW** Product.

Close-Coupled Pump, Three Phase, TEFC

Hp	RPM	NEMA Frame	Catalog Number	List Price	Mult. Sym.	"C" Dim.	Aprx. Wt. (lb)	Full Load Efficiency	Voltage	Full Load Amps	Notes (a)
50	3600	326JM	EJMM4114T	7,453	L1	30.65	595	93	230/460	56	1, 30
		326JP	EJPM4114T	7,453	L1	33.41	604	93	230/460	56	1, 30
		326JM	JMM4114T	6,174	L1	30.64	507	92.4	230/460	56	1, 16, 30
		326JP	JPM4114T	6,174	L1	33.51	517	92.4	230/460	56	1, 16, 30
	1800	326JM	EJMM4115T	7,585	L1	30.65	624	94.5	230/460	58	1, 30
		326JP	EJPM4115T	7,585	L1	33.41	646	94.5	230/460	58	1, 30
		326JP	JPM4115T	6,396	L1	33.41	595	93	230/460	59	1, 16, 30
575 Volts											
1	1800	143JM	EJMM3546T-5	889	L1	15.43	38	85.5	575	1.2	1
		143JM	JMM3546T-5	657	L1	15.43	38	82.5	575	1.3	1, 16
1 1/2	3600	143JM	EJMM3550T-5	877	L1	15.41	38	84	575	1.5	
		143JM	JMM3550T-5	690	L1	15.41	39	82.5	575	1.6	16
	1800	145JM	EJMM3554T-5	971	L1	15.43	41	86.5	575	1.8	1
		145JM	JMM3554T-5	690	L1	15.43	41	84	575	1.9	1, 16
2	3600	145JM	EJMM3555T-5	946	L1	15.41	41	85.5	575	2	
		145JM	JMM3555T-5	769	L1	15.41	49	84	575	2.1	16
	1800	145JM	EJMM3558T-5	1,018	L1	15.43	45	86.5	575	2.3	1
3	3600	145JM	EJMM3559T-5	1,022	L1	16.29	50	86.5	575	2.9	1
		145JM	JMM3559T-5	862	L1	16.29	55	85.5	575	3	1, 16
		182JM	EJMM3610T-5	1,138	L1	16.69	63	86.5	575	2.9	
		182JM	JMM3610T-5	894	L1	16.69	68	85.5	575	2.8	16
5	3600	182JM	EJMM3611T-5	1,096	L1	18.06	70	89.5	575	3.3	1
		184JM	EJMM3613T-5	1,234	L1	18.06	74	88.5	575	4.7	1
	1800	184JM	JMM3613T-5	1,104	L1	18.06	78	87.5	575	4.8	1, 16
		184JM	EJMM3615T-5	1,175	L1	19.56	93	89.5	575	5.3	1
7 1/2	3600	184JM	JMM3615T-5	964	L1	18.06	81	87.5	575	5.5	1, 16, 35
		184JM	EJMM3616T-5	1,546	L1	19.56	96	89.5	575	6.8	1
		184JM	JMM3616T-5	1,249	L1	19.56	91	88.5	575	7	2, 16, 20
		213JM	EJMM3710T-5	1,660	L1	20.88	127	91.7	575	7.6	1, 35
10	3600	215JM	EJMM3711T-5	1,819	L1	19.76	118	90.2	575	9.5	20
		215JM	EJMM3714T-5	1,831	L1	22.38	165	91.7	575	9.6	1, 35
		215JM	JMM3714T-5	1,556	L1	20.88	137	89.5	575	10.8	1, 16, 35
15	3600	215JM	EJMM3713T-5	2,429	L1	22.38	169	91	575	13.4	1
		215JM	JMM3713T-5	2,216	L1	21.64	170	90.2	575	13.8	1, 16, 35
		254JM	EJMM2394T-5	3,234	L1	23.07	225	91	575	13.5	1, 35
		254JM	JMM2394T-5	2,915	L1	23.07	225	90.2	575	13.7	1, 16, 35
	1800	254JM	EJMM2333T-5	3,020	L1	25.30	268	92.4	575	14.6	1, 35
		254JM	JMM2333T-5	2,842	L1	23.07	236	91	575	15.2	1, 16, 35

(a) See notes on inside back flap.

Cast Iron Frame

Red Catalog Number indicates **NEW** Product.

General Information

Single Phase Motors

General Purpose Industrial Motors

Severe Duty Motors

Large AC Motors

Washdown Duty Motors

Explosion Proof Motors

Pump Motors

HVAC Motors

Farm Duty Motors

Close-Coupled Pump, Three Phase, TEFC, Footless

1 thru 20 Hp



Features:

- Oversize ball bearings for the pump industry
- Locked DE bearing to allow mounting in any configuration
- Designed for longevity with a 3 year warranty on premium efficient Super-E® Motors
- Suitable for Inverter use per NEMA MG1 Part 31.4.4.2

Applications:

- General Purpose Pumps
- Industrial Applications
- Commercial Pumps
- Food and Beverage
- Wastewater
- Agricultural
- Aggregate

Hp	RPM	NEMA Frame	Catalog Number	List Price	Mult. Sym.	"C" Dim.	Aprx. Wt. (lb)	Full Load Efficiency	Voltage	Full Load Amps	Notes (a)
230/460 Volts											
1	1800	143JM	VEJMM3546T	691	L1	14.43	38	85.5	230/460	1.5	1, 30
		143JM	VJMM3546T	670	L1	14.43	35	82.5	208-230/460	1.56	1, 16
1 1/2	1800	145JM	VEJMM3554T	729	L1	15.43	45	86.5	230/460	2.2	1, 30
		145JM	VJMM3554T	701	L1	15.43	40	84	208-230/460	2.4	1, 16
2	1800	145JM	VEJMM3558T	873	L1	15.43	44	86.5	230/460	2.9	1, 30
		145JM	VJMM3558T	733	L1	15.43	43	84	208-230/460	3.1	1, 16
3	1800	182JM	VEJMM3611T	996	L1	18.05	74	89.5	230/460	4.2	1, 30
		182JM	VJMM3611T	876	L1	18.18	61	87.5	208-230/460	4.2	1, 16
5	1800	184JM	VEJMM3615T	1,149	L1	19.55	90	89.5	230/460	6.7	1, 30
		184JM	VJMM3615T	981	L1	18.05	78	87.5	208-230/460	6.8	1, 16
7 1/2	1800	213JM	VEJMM3710T	1,682	L1	20.92	136	91.7	230/460	9.4	1, 30
		213JM	VJMM3710T	1,274	L1	19.76	115	89.5	208-230/460	10.1	1, 16
10	1800	215JM	VEJMM3714T	1,948	L1	22.40	165	91.7	230/460	12	1, 30
		215JM	VJMM3714T	1,573	L1	20.92	132	89.5	208-230/460	13.5	1, 16
15	1800	254JM	VEJMM2333T	3,297	L1	25.28	278	92.4	230/460	18.1	1, 30
		254JM	VJMM2333T	2,867	L1	21.82	236	91	208-230/460	18.5	1, 16
20	1800	256JM	VEJMM2334T	3,510	L1	25.28	303	93	230/460	24	1, 30
575 Volts											
1	1800	143JM	VEJMM3546T-5	889	L1	15.43	38	86.5	575	1.1	1
		143JM	VJMM3546T-5	670	L1	14.43	38	82.5	575	1.3	1, 16
1 1/2	1800	145JM	VEJMM3554T-5	971	L1	16.31	41	86.5	575	1.6	1
		145JM	VJMM3554T-5	701	L1	15.43	40	84	575	1.9	1, 16
2	1800	145JM	VEJMM3558T-5	1,018	L1	15.43	45	86.5	575	2.2	1
		145JM	VJMM3558T-5	733	L1	15.43	44	84	575	2.5	1, 16
3	1800	182JM	VEJMM3611T-5	1,146	L1	18.05	70	89.5	575	3.1	1
		182JM	VJMM3611T-5	876	L1	18.18	72	87.5	575	3.3	1, 16, 35
5	1800	184JM	VEJMM3615T-5	1,175	L1	19.55	93	89.5	575	5.3	1
7 1/2	1800	213JM	VEJMM3710T-5	1,660	L1	20.92	127	91.7	575	7.6	1, 35
		213JM	VJMM3710T-5	1,274	L1	19.79	115	89.5	575	8.1	1, 16, 35
10	1800	215JM	VEJMM3714T-5	1,831	L1	22.42	165	91.7	575	9.6	1, 35
		215JM	VJMM3714T-5	1,573	L1	20.92	136	89.5	575	10.8	1, 16, 35
15	1800	254JM	VEJMM2333T-5	3,020	L1	25.28	255	92.4	575	14.6	1, 35
		254JM	VJMM2333T-5	2,867	L1	21.82	236	91	575	15.2	1, 16, 35
20	1800	256JM	VEJMM2334T-5	3,510	L1	25.28	303	93	575	19.2	1, 35
		256JM	VJMM2334T-5	2,964	L1	25.28	276	91	575	19.1	1, 16

(a) See notes on inside back flap.

Cast Iron Frame

Red Catalog Number indicates **NEW** Product.

Close-Coupled Pump, Three Phase, ODP

1 thru 75 Hp



Features:

- Rodent screens to protect against trash debris
- Oversize ball bearings for the pump industry
- Locked DE bearing to allow mounting in any configuration
- Designed for longevity with a 3 year warranty on premium efficient Super-E® Motors
- Suitable for Inverter use per NEMA MG1 Part 31.4.4.2

Applications:

- General Purpose Pumps
- Industrial Applications
- Commercial Pumps
- Food and Beverage
- Wastewater
- Agricultural
- Aggregate

Hp	RPM	NEMA Frame	Catalog Number	List Price	Mult. Sym.	"C" Dim.	Aprx. Wt. (lb)	Full Load Efficiency	Voltage	Full Load Amps	Notes (a)	
Foot Mounted, 230/460												
1	1800	143JM	EJMM3116T	707	L1	13.75	38	85.5	230/460	1.5	1, 30	
		143JP	EJPM3116T	862	L1	16.81	38	85.5	230/460	1.5	1, 30	
		143JM	JMM3116T	607	L1	13.75	35	82.5	208-230/460	1.56	16	
1 1/2	3600	143JM	EJMM3120T	763	L1	13.75	34	84	230/460	2	1, 30	
	1800	145JM	EJMM3154T	765	L1	13.75	38	86.5	230/460	2.2	1, 30	
			145JP	EJPM3154T	894	L1	16.81	37	86.5	230/460	2.2	1, 30
2	3600	145JM	EJMM3155T	846	L1	13.75	44	85.5	230/460	2.5	1, 30	
		145JM	JMM3155T	700	L1	13.75	42	84	208-230/460	2.6	16	
		145JM	EJMM3157T	837	L1	14.25	44	86.5	230/460	2.9	1, 30	
	1800	145JP	EJPM3157T	947	L1	17.31	43	86.5	230/460	2.9	1, 30	
			145JM	JMM3157T	685	L1	13.75	42	84	208-230/460	3.15	16
3	3600	145JM	EJMM3158T	950	L1	15.13	49	85.5	230/460	3.8	1, 30	
		145JP	EJPM3158T	878	L1	17.31	48	85.5	230/460	3.8	1, 30	
		145JM	JMM3158T	742	L1	14.25	48	84	208-230/460	3.7	16	
	1800	182JM	EJMM3211T	926	L1	16.50	72	89.5	230/460	4.2	1, 30	
		182JP	EJPM3211T	1,114	L1	19.56	74	89.5	230/460	4.2	1, 30	
		182JM	JMM3211T	735	L1	16.25	63	86.5	208-230/460	4.1	1, 16	
		182JP	JPM3211T	735	L1	19.31	61	86.5	208-230/460	4.1	1, 16	
5	3600	182JM	EJMM3212T	1,132	L1	15.12	64	86.5	230/460	6	1, 30	
		182JP	EJPM3212T	1,050	L1	18.18	63	86.5	230/460	6	1, 30	
		182TCZ	EWCM3212T	1,027	L1	18.32	63	86.5	230/460	6	1, 30	
		182JM	JMM3212T	834	L1	15.62	62	85.5	208-230/460	6.1	16	
		182JP	JPM3212T	834	L1	18.69	65	85.5	208-230/460	6.1	16	
		1800	182TCZ	WCM3212T	818	L1	19.13	69	85.5	208-230/460	6.1	1, 16
	184JM		EJMM3218T	1,047	L1	18.00	87	89.5	230/460	6.6	1, 30	
	184JP		EJPM3218T	1,196	L1	21.06	92	89.5	230/460	6.6	1, 30	
	184JM		JMM3218T	795	L1	16.50	73	87.5	208-230/460	7.2	1, 16	
	184JP		JPM3218T	795	L1	19.56	74	87.5	208-230/460	7.2	1, 16	
	1200	215JM	EJMM3309T	1,785	L1	19.31	141	89.5	230/460	7.4	1, 30	
			215JM	JMM3309T	1,276	L1	18.19	124	87.5	208-230/460	7.6	16
7 1/2	3600	184JM	EJMM3219T	1,338	L1	16.50	78	88.5	230/460	8.6	1, 30	
		184JP	EJPM3219T	1,515	L1	19.56	77	88.5	230/460	8.6	1, 30	
		184TCZ	EWCM3219T	1,492	L1	19.69	77	88.5	230/460	8.6	1, 30	
		184JM	JMM3219T	1,020	L1	16.50	71	87.5	208-230/460	8.7	1, 16	
		184JP	JPM3219T	1,020	L1	19.56	73	87.5	208-230/460	8.7	1, 16	
		1800	184TCZ	WCM3219T	995	L1	19.69	83	87.5	208-230/460	8.7	1, 16
	213JM		EJMM3311T	1,570	L1	18.19	120	91	230/460	9.7	1, 30	
	213JP		EJPM3311T	1,715	L1	20.94	130	91	230/460	9.3	1, 30	
	213JM		JMM3311T	1,155	L1	18.84	106	88.5	208-230/460	9.9	1, 16	
	213JP		JPM3311T	1,155	L1	22.07	124	88.5	208-230/460	10.1	1, 16	
	1200	254JM	EJMM2506T	2,453	L1	24.69	248	90.2	230/460	11	1, 30	
			254JM	JMM2506T	1,610	L1	21.81	160	88.5	208-230/460	11.2	1, 16

(a) See notes on inside back flap.
Red Catalog Number indicates **NEW** Product.

Close-Coupled Pump, Three Phase, ODP

Hp	RPM	NEMA Frame	Catalog Number	List Price	Mult. Sym.	"C" Dim.	Aprx. Wt. (lb)	Full Load Efficiency	Voltage	Full Load Amps	Notes (a)
10	3600	213JM	EJMM3312T	1,723	L1	18.19	120	89.5	230/460	12	1, 30
		213JP	EJPM3312T	1,723	L1	22.07	122	89.5	230/460	12	1, 30
		213TCZ	EWCM3312T	1,739	L1	21.25	121	89.5	230/460	12	1, 30
		213JM	JMM3312T	1,387	L1	18.19	116	88.5	208-230/460	12.4	1, 16
		213JP	JPM3312T	1,387	L1	22.07	120	88.5	208-230/460	12.4	1, 16
	213TCZ	WCM3312T	1,356	L1	21.25	114	88.5	208-230/460	12.4	16	
	1800	215JM	EJMM3313T	1,698	L1	19.31	136	91.7	230/460	12.5	1, 30
		215JP	EJPM3313T	1,698	L1	23.20	138	91.7	230/460	12.5	1, 30
		215JM	JMM3313T	1,372	L1	18.19	121	89.5	208-230/460	13.4	1, 16
		215JP	JPM3313T	1,372	L1	22.10	127	89.5	208-230/460	13.4	1, 16
1200	256JM	EJMM2511T	2,977	L1	24.69	255	91.7	230/460	14.3	1, 30	
15	3600	215JM	EJMM3314T	2,218	L1	18.19	131	90.2	230/460	17.5	1, 30
		215JP	EJPM3314T	2,218	L1	22.07	134	90.2	230/460	17.5	1, 30
		215TCZ	EWCM3314T	2,344	L1	21.25	131	90.2	230/460	17.5	1, 30
		215JM	JMM3314T	1,864	L1	18.19	126	89.5	208-230/460	18	1, 16
		215JP	JPM3314T	1,864	L1	22.07	131	89.5	208-230/460	18	1, 16
	215TCZ	WCM3314T	1,830	L1	21.25	137	89.5	208-230/460	18	1, 16	
	1800	254JM	EJMM2513T	2,511	L1	23.19	214	93	230/460	17.7	1, 30
		254JP	EJPM2513T	2,511	L1	26.06	219	93	230/460	17.7	1, 30
		254JM	JMM2513T	2,049	L1	21.06	155	91	208-230/460	19	1, 16
		254JP	JPM2513T	2,049	L1	23.94	175	91	208-230/460	19	1, 16
1200	284JM	EJMM2524T	3,907	L1	24.69	300	91.7	230/460	20.5	1, 30	
	284JM	JMM2524T	2,602	L1	27.56	323	90.2	230/460	21.3	16, 30	
20	3600	254JM	EJMM2514T	2,793	L1	23.19	195	91	230/460	23.5	1, 30
		254JP	EJPM2514T	2,793	L1	26.06	220	91	230/460	23.5	1, 30
		254JM	JMM2514T	2,461	L1	23.19	195	90.2	208-230/460	24	16
		254JP	JPM2514T	2,461	L1	26.06	206	90.2	230/460	24	16, 30
	1800	256JM	EJMM2515T	3,008	L1	23.19	248	93	230/460	23.5	1, 30
		256JP	EJPM2515T	3,008	L1	26.06	236	93	230/460	23.5	1, 30
		256JM	JMM2515T	2,484	L1	23.56	197	91	230/460	24.8	1, 16, 30
		256JP	JPM2515T	2,484	L1	26.44	197	91	230/460	24.8	1, 16, 30
		256JM	EJMM2516T	3,310	L1	23.19	219	91.7	230/460	28	1, 30
		256JP	EJPM2516T	3,310	L1	26.06	230	91.7	230/460	28	1, 30
25	3600	256JM	JMM2516T	3,049	L1	23.19	221	91	230/460	29	16, 30
		256JP	JPM2516T	3,049	L1	26.06	219	91	230/460	29	16, 30
		284JM	EJMM2531T	3,578	L1	25.94	317	93.6	230/460	30	1, 30
		284JP	EJPM2531T	3,578	L1	28.81	335	93.6	230/460	30	1, 30
	1800	284JM	JMM2531T	3,078	L1	25.06	281	91.7	230/460	31	16, 30
		284JP	JPM2531T	3,078	L1	27.94	282	91.7	230/460	31	16, 30
30	3600	284JM	EJMM2534T	4,207	L1	26.56	309	91.7	230/460	33	1, 30
		284JP	EJPM2534T	4,207	L1	29.44	310	91.7	230/460	33	1, 30
		284JM	JMM2534T	3,127	L1	25.06	267	91	230/460	35	16, 30
		284JP	JPM2534T	3,127	L1	27.94	270	91	230/460	35	16, 30
	1800	286JM	EJMM2535T	4,286	L1	25.94	359	94.1	230/460	35	1, 30
		286JP	EJPM2535T	4,286	L1	28.81	370	94.1	230/460	35	1, 30
		286JM	JMM2535T	3,529	L1	26.56	299	92.4	230/460	36	16, 30
		286JP	JPM2535T	3,529	L1	29.44	320	92.4	230/460	36	16, 30
40	3600	286JM	EJMM2538T	5,065	L1	26.56	328	92.4	230/460	45	1, 30
		286JP	EJPM2538T	5,065	L1	29.44	329	92.4	230/460	45	1, 30
		286JM	JMM2538T	4,593	L1	26.56	307	91.7	230/460	45	16, 30
		286JP	JPM2538T	4,593	L1	29.44	308	91.7	230/460	45	16, 30
	1800	324JM	EJMM2539T	5,210	L1	27.44	417	94.1	230/460	49	1, 30
		324JP	EJPM2539T	5,210	L1	30.31	378	94.1	230/460	47	1, 30
		324JM	JMM2539T	4,575	L1	26.44	375	93	230/460	49	1, 16, 30
		324JP	JPM2539T	4,575	L1	29.31	378	93	230/460	49	1, 16, 30

(a) See notes on inside back flap.
 Red Catalog Number indicates **NEW** Product.

Close-Coupled Pump, Three Phase, ODP

Hp	RPM	NEMA Frame	Catalog Number	List Price	Mult. Sym.	"C" Dim.	Aprx. Wt. (lb)	Full Load Efficiency	Voltage	Full Load Amps	Notes (a)
50	3600	324JM	EJMM2542T	5,710	L1	26.94	421	93	230/460	58	1, 30
		324JP	EJPM2542T	5,710	L1	29.81	424	93	230/460	58	1, 30
		324JM	JMM2542T	4,997	L1	26.44	368	92.4	230/460	58	16, 30
		324JP	JPM2542T	4,997	L1	29.31	376	92.4	230/460	58	16, 30
	1800	326JM	EJMM2543T	6,025	L1	27.94	491	94.5	230/460	57	1, 30
		326JP	EJPM2543T	6,025	L1	30.81	500	94.5	230/460	57	1, 30
		326JM	JMM2543T	5,205	L1	27.44	406	93	230/460	62	16, 30
		326JP	JPM2543T	5,205	L1	30.31	415	93	230/460	62	16, 30
60	3600	326JM	EJMM2546T	7,095	L1	26.94	472	93.6	230/460	68	1, 30
		326JM	JMM2546T	6,220	L1	26.44	401	93	230/460	68	16, 30
	1800	364JP	EJPM2547T	7,451	L1	33.19	565	95	230/460	68	1, 30
		364JP	JPM2547T	5,912	L1	30.44	507	93.6	230/460	72	16, 30
75	1800	365JP	EJPM2551T	8,878	L1	36.22	597	95	230/460	87	1, 30
		365JP	JPM2551T	7,764	L1	32.44	586	94.1	230/460	88	16, 30
Foot Mounted, 575 Volts											
3	3600	145JM	EJMM3158T-5	878	L1	14.25	48	85.5	575	3	
	1800	182JM	EJMM3211T-5	1,114	L1	16.50	74	89.5	575	3.1	1
		182JM	JMM3211T-5	735	L1	17.04	67	86.5	575	3.3	1, 16
5	3600	182JM	EJMM3212T-5	1,050	L1	16.50	63	90.2	575	4.5	
	1800	184JM	EJMM3218T-5	1,196	L1	18.00	92	89.5	575	5.2	1
		184JM	JMM3218T-5	795	L1	16.50	73	87.5	575	5.7	1, 16, 35
7 1/2	3600	184JM	EJMM3219T-5	1,515	L1	16.50	77	88.5	575	6.9	1
		184JM	JMM3219T-5	1,020	L1	16.50	73	87.5	575	7	1, 16
	1800	213JM	EJMM3311T-5	1,715	L1	18.19	120	91	575	7.4	1, 35
213JM		JMM3311T-5	1,155	L1	18.84	95	88.5	575	7.9	1, 16, 35	
10	3600	213JM	EJMM3312T-5	1,774	L1	19.31	137	91.7	575	9.2	
	1800	215JM	EJMM3313T-5	2,006	L1	18.19	132	91.7	575	10	1
15	3600	215JM	EJMM3314T-5	2,379	L1	19.31	131	90.2	575	14	1
Footless, 230/460											
1	1800	143JM	VEJMM3116T	707	L1	14.43	37	85.5	230/460	1.5	1, 30
1 1/2	1800	145JM	VEJMM3154T	758	L1	15.43	43	86.5	230/460	2.2	1, 30
2	1800	145JM	VEJMM3157T	829	L1	15.43	46	86.5	230/460	2.9	1, 30
		145JM	VJMM3157T	680	L1	15.43	42	84	208-230/460	3.15	1, 16
3	3600	145JM	VEJMM3158T	878	L1	14.25	48	85.5	230/460	3.8	1, 30
	1800	184JM	VEJMM3211T	910	L1	18.06	74	89.5	230/460	4.2	1, 30
		182JM	VJMM3211T	742	L1	18.22	62	86.5	208-230/460	4.1	1, 16
5	3600	182JM	VEJMM3212T	1,050	L1	16.66	63	86.5	230/460	6	1, 30
		182JM	VJMM3212T	874	L1	16.84	60	85.5	208-230/460	6.1	16
	1800	184JM	VEJMM3218T	1,030	L1	19.56	84	89.5	230/460	6.6	1, 30
		184JM	VJMM3218T	793	L1	18.06	73	87.5	208-230/460	7.2	1, 16
7 1/2	3600	184JM	VEJMM3219T	1,515	L1	18.04	77	88.5	230/460	8.6	1, 30
		184JM	VJMM3219T	1,029	L1	18.06	74	87.5	208-230/460	8.7	1, 16
	1800	213JM	VEJMM3311T	1,554	L1	19.78	125	91	230/460	9.6	1, 30
		213JM	VJMM3311T	1,158	L1	19.78	122	88.5	208-230/460	10.1	1, 16
10	3600	213JM	VEJMM3312T	1,774	L1	18.19	121	89.5	230/460	12	1, 30
		213JM	VJMM3312T	1,291	L1	18.19	110	88.5	208-230/460	12.4	1, 16
	1800	215JM	VEJMM3313T	1,682	L1	22.41	165	91.7	230/460	12	1, 30
		215JM	VJMM3313T	1,356	L1	19.78	119	89.5	208-230/460	13.4	1, 16
15	3600	215JM	VEJMM3314T	2,379	L1	18.69	131	90.2	230/460	17.5	1, 30

(a) See notes on inside back flap.
Red Catalog Number indicates **NEW** Product.

Washdown Close-Coupled Pump, Three Phase, Totally Enclosed

1 thru 15 Hp

IP55



Features:

- Oversized, double sealed ball bearings
- Locked DE bearing
- Neoprene gaskets
- Lip and V-ring seal on DE
- NEMA Premium® efficiency
- Electrostatically applied epoxy finish
- 300 series stainless steel hardware and shaft extension

Applications:

- Water pumps commercial and industrial
- Food processing
- Wet environment

Hp	RPM	NEMA Frame	Enclosure	Catalog Number	List Price	Mult. Sym.	"C" Dim.	Aprx. Wt. (lb)	Full Load Efficiency	Voltage	Full Load Amps	Notes (a)
1	1800	143JM	TENV	JMEWDM3546T	1,141	WD	14.25	39	85.5	230/460	1.5	30
1 1/2	3600	143JM	TENV	JMEWDM3550T	1,147	WD	14.25	48	85.5	230/460	2	1, 30
	1800	145JM	TENV	JMEWDM3554T	1,192	WD	15.13	50	86.5	230/460	2.1	1, 30
2	3600	145JM	TEFC	JMEWDM3555T	1,252	WD	15.43	47	85.5	230/460	2.5	1, 30
	1800	145JM	TEFC	JMEWDM3558T	1,305	WD	16.31	48	86.5	230/460	2.9	1, 30
3	3600	145JM	TEFC	JMEWDM3559T	1,529	WD	16.31	50	86.5	230/460	3.6	1, 30
	1800	182JM	TEFC	JMEWDM3611T	1,712	WD	18.05	70	89.5	230/460	4.2	1, 30
5	3600	184JM	TEFC	JMEWDM3613T	2,018	WD	18.05	81	88.5	230/460	5.6	1, 30
	1800	184JM	TEFC	JMEWDM3615T	1,928	WD	19.55	93	89.5	230/460	6.7	1, 30
7 1/2	3600	184JM	TEFC	JMEWDM3616T	2,391	WD	19.55	96	89.5	230/460	8.4	1, 30
	1800	213JM	TEFC	JMEWDM3710T	2,423	WD	16.66	127	91.7	230/460	9.4	1, 30
10	3600	215JM	TEFC	JMEWDM3711T	3,087	WD	16.66	130	90.2	230/460	10.8	1, 30
	1800	215JM	TEFC	JMEWDM3714T	2,576	WD	18.16	165	91.7	230/460	12	1, 30
15	3600	215JM	TEFC	JMEWDM3713T	3,851	WD	21.64	169	91	230/460	17	1, 30
	1800	254JM	TEFC	JMEWDM23933T	5,323	WD	25.06	252	92.4	230/460	18	1, 30
20	3600	256JM	TEFC	JMEWDM41906T	6,180	WD	25.06	255	91	230/460	23	1, 30
	1800	256JM	TEFC	JMEWDM23934T	6,151	WD	25.06	275	93	230/460	24	1, 30

(a) See notes on inside back flap.

Red Catalog Number indicates **NEW** Product.

General Information

Single Phase Motors

General Purpose Industrial Motors

Severe Duty Motors

Large AC Motors

Washdown Duty Motors

Explosion Proof Motors

Pump Motors

HVAC Motors

Farm Duty Motors

BALDOR • RELIANCE**Pump Motors****SSE Super-E Stainless Steel, Close-Coupled Pump,
Three Phase, Totally Enclosed, Encapsulated****1 thru 10 Hp****IP56** **IP69K**
for Water**Features:**

- 300 series stainless steel motor frame, endplates, conduit boxes, shaft and base
- Endplate rabbets with O-ring seals
- Epoxy encapsulated windings
- Sealed ball bearings
- Laser etched nameplate
- NEMA Premium[®] efficiency
- 3 year warranty

Applications:

- Water pumps commercial and industrial
- Food processing
- Pressure washed environment

Hp	RPM	NEMA Frame	Enclosure	Catalog Number	List Price	Mult. Sym.	"C" Dim.	Aprx. Wt. (lb)	Full Load Efficiency	Voltage	Full Load Amps	Notes (a)
1	1800	143JM	TENV	JMSSEWDM3546T	1,805	WD	14.94	62	87.5	208-230/460	1.5	
1 1/2	3600	143JM	TENV	JMSSEWDM3550T	1,809	WD	15.82	68	85.5	208-230/460	1.8	
	1800	145JM	TEFC	JMSSEWDM3554T	1,820	WD	16.96	69	88.5	208-230/460	2.2	
2	3600	145JM	TEFC	JMSSEWDM3555T	2,138	WD	16.96	72	86.5	208-230/460	2.5	
	1800	145JM	TEFC	JMSSEWDM3558T	2,168	WD	18.34	74	88.5	208-230/460	2.7	
3	3600	145JM	TEFC	JMSSEWDM3559T	2,568	WD	18.34	83	86.5	208-230/460	3.7	
	1800	182JM	TEFC	JMSSEWDM3611T	2,696	WD	19.73	108	89.5	230/460	4.2	30
5	3600	184JM	TEFC	JMSSEWDM3613T	2,904	WD	18.23	104	89.5	208-230/460	5.6	
	1800	184JM	TEFC	JMSSEWDM3615T	2,924	WD	19.73	121	89.5	208-230/460	6.5	
7 1/2	3600	213JM	TEFC	JMSSEWDM3709T	3,423	WD	21.56	184	91	208-230/460	8.3	
	1800	213JM	TEFC	JMSSEWDM3710T	3,487	WD	22.75	135	91.7	208-230/460	9.5	
10	3600	215JM	TEFC	JMSSEWDM3711T	3,838	WD	22.75	154	91.7	208-230/460	10.6	
	1800	215JM	TEFC	JMSSEWDM3714T	4,049	WD	24.19	187	92.4	208-230/460	12.5	

(a) See notes on inside back flap.

P-Base Vertical Solid Shaft Pump, Three Phase, TEFC

3 thru 75 Hp



Features:

- Vertical lifting provisions for ease of installation
- Severe Duty construction for harsh environments
- Corrosion resistant epoxy finish
- Stainless steel nameplates and seals

Applications:

- Normal, Medium, and High thrust Applications
- Severe Duty Applications
- Harsh Environments
- Petro Chemical
- Pulp and Paper
- Wastewater
- Aggregate

Hp	RPM	NEMA Frame	Catalog Number	List Price	Mult. Sym.	"C" Dim.	Aprx. Wt. (lb)	Full Load Efficiency	Voltage	Full Load Amps	Notes (a)
Normal Thrust											
3	3600	182HP	VHECP3660T	2,394	SD	22.18	120	89.5	230/460	3.5	1, 30
	1800	182HP	VHECP3661T	2,144	SD	22.18	129	89.5	230/460	4.1	1, 30
5	3600	184HP	VHECP3663T	3,092	SD	22.18	99	90.2	230/460	5.7	1, 30
	1800	184HP	VHECP3665T	2,855	SD	22.18	141	89.5	230/460	6.6	1, 30
7 1/2	3600	213HP	VHECP3769T	3,661	SD	22.51	173	91	230/460	8.6	1, 30
	1800	213HP	VHECP3770T	3,543	SD	22.51	170	91.7	230/460	9.5	1, 30
10	3600	215HP	VHECP3771T	3,818	SD	22.51	203	92.4	230/460	11	1, 30
	1800	215HP	VHECP3774T	3,975	SD	22.51	231	92.4	230/460	12.5	1, 30
15	3600	254HP	VHECP2394T	4,401	SD	25.73	296	91.7	230/460	17.2	1, 30
	1800	254HP	VHECP2333T	4,562	SD	25.72	316	92.4	230/460	18.1	1, 30
20	3600	256HP	VHECP4106T	4,786	SD	25.73	325	92.4	230/460	23	1, 30
	1800	256HP	VHECP2334T	5,181	SD	25.73	337	93	230/460	24	1, 30
25	3600	284HP	VHECP4107T	5,089	SD	25.72	337	93	230/460	28	1, 30
	1800	284HP	VHECP4103T	5,780	SD	30.69	518	93.6	230/460	30	1, 30
30	3600	286HP	VHECP4108T	5,604	SD	25.72	361	93	230/460	33	1, 30
	1800	286HP	VHECP4104T	6,486	SD	30.69	563	94.1	230/460	36	1, 30
40	3600	324HP	VHECP4109T	7,844	SD	34.72	600	93.6	230/460	45	1, 30
	1800	324HP	VHECP4110T	7,335	SD	34.72	650	94.5	230/460	46	1, 30
50	3600	326HP	VHECP4114T	9,612	SD	34.72	668	93	230/460	56	1, 30
	1800	326HP	VHECP4115T	10,362	SD	34.72	764	94.5	230/460	58	1, 30
60	3600	364HP	VHECP4310T	12,280	SD	35.36	959	95	230/460	65.1	1, 30
	1800	364HP	VHECP4314T	12,819	SD	35.36	969	95	230/460	68	1, 30
75	3600	365HP	VHECP4313T	15,342	SD	35.36	1042	94.5	230/460	80.7	1, 30
	1800	365HP	VHECP4316T	15,611	SD	35.36	1008	95.4	230/460	85.9	1, 30
Medium Thrust											
3	3600	182LP	VLECP3660T	1,752	SD	22.18	99	88.5	230/460	3.4	1
		182LP	VLCP3660T	2,292	SD	22.18	83	85.5	208-230/460	3.7	1, 16
	1800	182LP	VLECP3661T	1,783	SD	22.18	105	89.5	230/460	4.1	1
5	3600	184LP	VLECP3663T	2,005	SD	22.18	105	90.2	230/460	5.7	1
		184LP	VLECP3665T	1,809	SD	22.18	119	89.5	230/460	6.6	1
	1800	184LP	VLCP3665T	2,730	SD	22.18	131	87.5	208-230/460	6.9	1, 16
7 1/2	3600	213LP	VLECP3769T	2,348	SD	22.51	169	91	230/460	8.6	1
	1800	213LP	VLECP3770T	2,291	SD	22.51	170	91.7	230/460	9.5	1
10	3600	215LP	VLECP3771T	2,617	SD	22.51	182	92.4	230/460	11	1
		215LP	VLCP3771T	3,654	SD	22.51	171	89.5	208-230/460	12	1, 16
	1800	215LP	VLECP3774T	2,474	SD	22.51	231	92.4	230/460	12.5	1
		215LP	VLCP3774T	3,802	SD	22.51	169	89.5	208-230/460	13	1, 16
15	3600	254LP	VLECP2394T	4,028	SD	25.73	225	91	230/460	17	1
		254LP	VLECP2333T	3,814	SD	25.73	268	92.4	230/460	18.1	1
	1800	254LP	VLCP2333T	4,364	SD	25.54	236	91	208-230/460	18.5	1, 16

(a) See notes on inside back flap.

Cast Iron Frame

Red Catalog Number indicates **NEW** Product.

P-Base Vertical Solid Shaft Pump, Three Phase, TEFC

Hp	RPM	NEMA Frame	Catalog Number	List Price	Mult. Sym.	"C" Dim.	Aprx. Wt. (lb)	Full Load Efficiency	Voltage	Full Load Amps	Notes (a)
20	3600	256LP	VLECP4106T	4,274	SD	25.73	265	92.4	230/460	22	1
		256LP	VLCP4106T	4,596	SD	25.72	338	90.2	230/460	23	1, 16
	1800	256LP	VLECP2334T	4,304	SD	25.73	303	93	230/460	24	1
		256LP	VLCP2334T	4,953	SD	25.72	307	91	230/460	24	1, 16, 30
25	3600	284LP	VLECP4107T	5,747	SD	32.44	396	91.7	230/460	28	1
		284LP	VLCP4107T	4,868	SD	27.47	372	91	230/460	28	1, 16, 30
	1800	286LP	VLECP4103T	5,795	SD	32.44	420	93.6	230/460	30	1
		286LP	VLCP4103T	5,527	SD	27.47	384	92.4	230/460	30	1, 16, 30
30	3600	286LP	VLECP4108T	6,426	SD	32.44	446	91.7	230/460	34	1
		286LP	VLCP4108T	5,358	SD	27.47	383	91	208-230/460	34	1, 16
	1800	286LP	VLECP4104T	6,476	SD	32.44	460	94.1	230/460	36	1
40	3600	324LP	VLECP4109T	8,585	SD	34.72	528	93.6	230/460	45	1
		324LP	VLECP4110T	8,381	SD	34.72	600	94.5	230/460	46	1
	1800	324LP	VLCP4110T	7,015	SD	34.72	638	93	230/460	47	1, 16, 30
High Thrust											
50	3600	326VP	VPECP4114T	6,429	SD	34.71	587	93	230/460	56	1
		326VP	VPCP4114T	9,191	SD	34.71	646	92.4	208-230/460	57	1, 16
	1800	326VP	VPECP4115T	6,199	SD	34.71	700	94.5	230/460	58	1
		326VP	VPCP4115T	9,907	SD	34.71	660	93	230/460	59	1, 16, 30
60	3600	364VP	VPECP4310T	9,032	SD	37.25	999	95	230/460	65.1	1
		364VP	VPECP4314T	8,919	SD	37.25	910	95	230/460	68	1
	1800	364VP	VPCP4314T	11,035	SD	37.25	933	93.6	230/460	73.4	1, 16, 30
75	3600	365VP	VPECP4313T	10,507	SD	37.25	1005	94.5	230/460	80.7	1
		365VP	VPCP4313T	13,203	SD	37.25	982	93	230/460	87.9	1, 16, 30
	1800	365VP	VPECP4316T	10,429	SD	37.25	965	95.4	230/460	85.9	1
		365VP	VPCP4316T	13,434	SD	37.25	1010	94.1	230/460	87	1, 16, 30

(a) See notes on inside back flap.
 ■ Cast Iron Frame
 Red Catalog Number indicates **NEW** Product.

General Information
 Single Phase Motors
 General Purpose Industrial Motors
 Severe Duty Motors
 Large AC Motors
 Washdown Duty Motors
 Explosion Proof Motors
 Pump Motors
 HVAC Motors
 Farm Duty Motors

P-Base Vertical Solid Shaft Pump, Three Phase, ODP

3 thru 60 Hp



Features:

- Safeguard drip cover
- Cast iron construction for harsh environments
- Vertical lifting provisions for ease of installation
- Stainless steel nameplates
- Corrosion resistant epoxy finish

Applications:

- Normal Thrust Applications
- Severe Duty Applications
- Harsh Environments
- Petro Chemical
- Pulp and Paper
- Wastewater
- Aggregate

Hp	RPM	NEMA Frame	Catalog Number	List Price	Mult. Sym.	"C" Dim.	Aprx. Wt. (lb)	Full Load Efficiency	Voltage	Full Load Amps	Notes (a)
3	3600	182HP	VHEM3210T	1,069	L1	21.33	61	86.5	230/460	3.8	1, 17, 30
		182HP	VHEM3211T	1,200	L1	21.33	100	89.5	230/460	4.2	1, 17, 30
	1800	182HP	VHM3211T	1,861	L1	21.33	96	86.5	208-230/460	4.2	1, 16, 17
5	3600	184HP	VHEM3212T	1,136	L1	21.33	95	86.5	230/460	5.6	1, 17, 30
		184HP	VHM3212T	2,686	L1	21.33	99	85.5	208-230/460	5.7	1, 16, 17
	1800	184HP	VHEM3218T	1,282	L1	21.33	119	89.5	230/460	6.6	1, 17, 30
7 1/2	3600	184HP	VHEM3219T	1,601	L1	21.33	122	88.5	230/460	8.4	1, 17, 30, 35
		184HP	VHM3219T	3,181	L1	21.33	158	87.5	208-230/460	8.5	1, 16, 17, 35
	1800	213HP	VHEM3311T	1,815	L1	23.73	173	91	230/460	10.8	1, 17, 30
10	3600	213HP	VHM3311T	3,078	L1	23.73	169	88.5	208-230/460	10.7	1, 16, 17
		213HP	VHEM3312T	1,874	L1	23.73	164	89.5	230/460	11.2	1, 17, 30
	1800	215HP	VHEM3313T	2,106	L1	23.73	231	91.7	230/460	12.9	1, 17, 30
15	3600	215HP	VHM3313T	3,454	L1	23.73	165	89.5	208-230/460	13	1, 16, 17
		215HP	VHEM3314T	2,479	L1	23.73	203	90.2	230/460	16.9	1, 17, 30
	1800	254HP	VHEM2513T	3,172	L1	26.74	360	93	230/460	18.2	1, 17, 30
20	3600	254HP	VHM2513T	3,632	L1	26.74	337	91	208-230/460	18.1	1, 16, 17
		254HP	VHEM2514T	3,207	L1	26.73	229	91	230/460	23	1, 17, 30
	1800	254HP	VHM2514T	3,812	L1	26.73	310	90.2	230/460	23.5	1, 16, 17, 30
25	3600	256HP	VHEM2515T	3,402	L1	26.73	283	93	230/460	24	1, 17, 30
		256HP	VHM2515T	4,125	L1	25.81	334	91	230/460	25	1, 16, 17, 30
	1800	256HP	VHEM2516T	3,689	L1	26.73	283	91.7	230/460	29	1, 17, 30
30	3600	284HP	VHM2516T	4,055	L1	26.73	333	91	230/460	29	1, 16, 17, 30
		284HP	VHEM2531T	4,143	L1	29.93	420	93.6	230/460	31	1, 17, 30
	1800	284HP	VHM2531T	4,602	L1	29.93	442	92.4	230/460	30	1, 16, 17, 30
40	3600	284HP	VHEM2534T	4,381	L1	29.93	385	91.7	230/460	33	1, 17, 30
		284HP	VHM2534T	4,461	L1	26.74	450	91	230/460	34	1, 16, 17, 30
	1800	286HP	VHEM2535T	4,439	L1	29.93	460	94.1	230/460	36	1, 17, 30
50	3600	286HP	VHM2535T	5,168	L1	29.93	462	92.4	230/460	38.2	1, 16, 17, 30
		286HP	VHEM2538T	5,362	L1	29.93	410	92.4	230/460	46	1, 17, 30
	1800	286HP	VHM2538T	6,437	L1	29.93	486	91.7	230/460	45	1, 16, 17, 30
60	3600	324HP	VHEM2539T	5,846	L1	33.87	600	94.1	230/460	48	1, 17, 30
		324HP	VHM2539T	6,020	L1	33.87	660	93	230/460	47	1, 16, 17, 30
	1800	324HP	VHEM2542T	6,106	L1	33.87	500	93	230/460	58	1, 17, 30
50	3600	324HP	VHM2542T	7,888	L1	33.87	680	92.4	208-230/460	57	1, 16, 17
		326HP	VHEM2543T	6,313	L1	33.87	700	94.5	230/460	58	1, 17, 30
	1800	326HP	VHM2543T	8,504	L1	33.87	682	93	230/460	59	1, 16, 17, 30
60	3600	326HP	VHEM2546T	7,373	L1	33.87	641	93.6	230/460	66	1, 17, 30
		326HP	VHM2546T	10,078	L1	33.87	705	93	208-230/460	66	1, 16, 17

(a) See notes on inside back flap.

■ Cast Iron Frame

Custom TEFC motors available through 2,250 Hp; Open and WPIL custom motors through 15,000 Hp. Contact your Baldor Sales Representative.

THRUST BEARINGS MUST BE LOADED TO A MINIMUM OF 20% OF RATED THRUST FOR PROPER BEARING LOADING AND LIFE.

Red Catalog Number indicates **NEW** Product.

SAE Hydraulic Pump Motors, Three Phase, TEFC**5 thru 10 Hp****Features:**

- Rated for continuous duty
- F-3 mounted conduit box
- SAE A or B-B pump configuration
- Designed for longevity with a 3 year warranty on premium efficient Super-E® Motors

Applications:

- Industrial Pumps
- SAE Pump Applications
- General Purpose Pumps
- Commercial Machinery
- Food and Beverage
- Wastewater
- Agricultural

Hp	RPM	NEMA Frame	Catalog Number	List Price	Mult. Sym.	"C" Dim.	Aprx. Wt. (lb)	Full Load Efficiency	Voltage	Full Load Amps	Notes (a)
5	1800	184TYZ	EHPM3615T	1,040	L1	15.00	93	89.5	230/460	6.7	
		184TYZ	HPM3615T	842	L1	13.50	82	87.5	208-230/460	6.8	16
7 1/2	1800	213TYZ	EHPM3710T	1,447	L1	15.79	127	91.7	230/460	9.4	
		213TYZ	HPM3710T	1,082	L1	14.66	127	89.5	208-230/460	10.1	16
10	1800	215TYZ	EHPM3714T	1,618	L1	17.29	165	91.7	230/460	12	
		215TYZ	HPM3714T	1,277	L1	15.79	136	89.5	208-230/460	13.5	16

(a) See notes on inside back flap.

Red Catalog Number indicates **NEW** Product.**Submersible Motors, Single Phase, TENV****1 thru 5 Hp****Features:**

- Continuous duty in water/sewage
- 15 minute in air
- 416 stainless steel shaft
- Dual carbon ceramic mechanical seals
- Two NC thermostats
- 25 feet of cable
- Dual moisture sensing probes
- NEMA 1 enclosure control box
- 1.15 SF
- UL listed, Division 1, Class I, Group C & D, T3C
- 5 year pro-rated warranty

Applications:

- Wet pit applications
- Slurry pumps
- Aerators
- Mixers

Hp	RPM	NEMA Frame	New Catalog Number	Old Catalog Number	XP Cls/Grp	Temp Code	List Price	Mult. Sym.	"C" Dim.	Aprx. Wt. (lb)	Full Load Efficiency	Voltage	Full Load Amps	Notes (a)
1	1800	180TY	SUL50104SM	C18G2730	④	T3C	5,725	S1	25.94	240	55	230	8.1	10,81,97
	1200	180TY	SUL50106SM	C18G2700	④	T3C	5,991	S1	25.94	240	55.6	230	8.6	10,81,97
1 1/2	1800	180TY	SUL50154SM	C18G2731	④	T3C	5,725	S1	25.94	291	62.5	230	10.6	10,81,98
	1200	180TY	SUL50156SM	C18G2701	④	T3C	6,850	S1	25.94	256	57	230	12.5	10,81,99
2	1800	180TY	SUL50204SM	C18G2702	④	T3C	6,347	S1	25.94	250	60.9	230	14.4	10,81,100
3	1800	180TY	SUL50304SM	C18G2703	④	T3C	7,935	S1	26.66	260	64.7	230	20	10,81,101
		180TY	SUL50304	C18G2704	④	T3C	7,935	S1	25.94	256	64.7	230	20	10,81
3	1200	210TY	SUL50306SM	C21G2701	④	T3C	9,727	S1	32.41	315	65.6	230	21	10,81,97
		210TY	SUL50504	C21G2702	④	T3C	10,566	S1	31.69	369	69	230	30	10,82

(a) See notes on inside back flap.

④ = Class I, Group C & D

■ Cast Iron Frame

Red Catalog Number indicates **NEW** Product.**IMMERSIBLE MOTORS AVAILABLE THROUGH 250 HP. CONTACT YOUR LOCAL BALDOR•RELIANCE DISTRICT OFFICE WITH YOUR INQUIRY AND SPECIFICATIONS.****NEW!**

Submersible Motors, Three Phase, TENV

1 thru 100 Hp



Features:

- Continuous duty in water/sewage
- 15 minute in air
- 416 stainless steel shaft
- Dual carbon ceramic mechanical seals
- Two NC thermostats
- 25 feet of cable
- Dual moisture sensing probes
- 1.15 SF
- UL listed, Division 1, Class I, Group C & D, T3C
- Inverter capable for 10:1 variable torque
- UL listed, Division 1, Class I, Group C & D, T2A on Inverter
- 5 year pro-rated warranty

Applications:

- Wet pit applications
- Slurry pumps
- Aerators
- Mixers

Hp	RPM	NEMA Frame	New Catalog Number	Old Catalog Number	XP Cls/Grp	Temp Code	List Price	Mult. Sym.	"C" Dim.	Aprx. Wt. (lb)	Full Load Efficiency	Voltage	Full Load Amps	Notes (a)
UL Listed, Hazardous Duty, Explosion Proof														
1	1800	180TY	SUM70104SM	P18G2784	④	T3C	5,102	S1	25.94	169	63.5	230	3.4	81, 97
1 1/2	1800	180TY	SUM70154SM	P18G2787	④	T3C	5,226	S1	25.94	175	70.5	230	4.6	81, 97
2	1800	180TY	SUM70204SM	P18G2791	④	T3C	5,324	S1	25.94	183	73.5	230	5.8	81, 97
		180TY	SUM70204SM-8	P18G2792	④	T3C	5,324	S1	25.94	182	73.5	200	6.7	81, 97
3	1800	180TY	SUM70304SM	P18G2794	④	T3C	5,382	S1	25.94	200	78.1	230	8.8	81, 97
		1200	SUM70306	P18G2707	④	T3C	5,469	S1	26.66	235	78	230	10.4	81
5	1800	180TY	SUM70504	P18G2701	④	T3C	5,611	S1	26.66	240	80.2	230	14	81
		180TY	SUM70504-4	P18G2702	④	T3C	5,611	S1	26.66	235	80.2	460	7	81
	180TY	SUM70504-8	P18G2739	④	T3C	5,611	S1	26.66	235	80.2	200	16.1	81	
	1200	SUM70506	P18G2709	④	T3C	7,412	S1	26.66	248	80.7	230	16	81	
7 1/2	1800	180TY	SUM70754	P18G2703	④	T3C	7,021	S1	26.66	243	82.7	230	20.2	81
		180TY	SUM70754-4	P18G2704	④	T3C	7,021	S1	26.66	245	82.7	460	10.1	81
	1200	210TY	SUM70756	P21G2705	④	T3C	8,190	S1	31.69	350	81.7	230	22.6	81
		210TY	SUM70756-4	P21G2770	④	T3C	8,190	S1	31.69	350	81.7	460	11.3	10,81
10	1800	210TY	SUM71004	P21G2701	④	T3C	7,567	S1	31.69	356	85.6	230	26	81
		210TY	SUM71004-4	P21G2702	④	T3C	7,567	S1	31.69	356	85.6	460	13	81
	1200	210TY	SUM71006	P21G2707	④	T3C	10,014	S1	31.69	391	83.8	230	28.8	81
15	1800	210TY	SUM71006-4	P21G2769	④	T3C	10,014	S1	31.69	391	83.8	460	14.4	10,81
		210TY	SUM71504	P21G2703	④	T3C	9,694	S1	31.69	376	85.4	230	40.2	81
	1200	210TY	SUM71504-4	P21G2704	④	T3C	9,694	S1	31.69	374	85.4	460	20.1	81
20	1800	250TY	SUM71506-4	P25G2707	④	T3C	13,228	S1	37.34	469	86.5	460	20.3	81
		210TY	SUM72004SM-4	P21G2737	④	T3C	10,684	S1	32.41	378	86.6	460	26.2	81, 97
	1200	210TY	SUM72004-4	P21G2758	④	T3C	11,257	S1	31.69	407	86.6	460	26.2	81
25	1800	250TY	SUM72006-4	P25G2710	④	T3C	14,587	S1	37.34	474	86.7	460	27.4	81
		250TY	SUM72504-4	P25G2702	④	T3C	13,650	S1	37.34	495	88.5	460	32.1	81
	1200	250TY	SUM72504SM-4	P25G2747	④	T3C	13,650	S1	37.06	517	88.5	460	32.1	81, 97
30	1800	250TY	SUM72506-4	P25G2712	④	T3C	18,927	S1	37.34	496	86.7	460	35.2	81
		250TY	SUM73004-4	P25G2704	④	T3C	14,744	S1	37.34	445	88.7	460	39.9	81
	1200	320TY	SUM73006-4	P32G2700	④	T3C	22,712	S1	43.12	1150	89.7	460	40.7	10,82
40	1800	250TY	SUM74004-4	P25G2706	④	T3C	19,961	S1	37.34	510	89	460	51.7	82
		320TY	SUM75004-4	P32G2701	④	T3C	23,360	S1	43.12	882	91.1	460	64.3	10,82
	1200	320TY	SUM75004SM-4	P32G2724	④	T3C	23,360	S1	42.50	880	91.1	460	64.3	10,82, 97
60	1800	320TY	SUM75006-4	P32G2702	④	T3C	25,332	S1	43.12	872	90.5	460	65.9	10,82
		320TY	SUM76004-4	P32G2706	④	T3C	29,877	S1	43.12	950	92	460	74.9	10,83
75	1800	320TY	SUM77504-4	P32G2703	④	T3C	38,734	S1	43.12	956	92.6	460	91.3	10,84
		360TY	SUM77506-4	P36G2700	④	T3C	39,606	S1	47.10	1374	92.3	460	90.9	10,85
100	1800	360TY	SUM710004-4	P36G2701	④	T3C	41,185	S1	47.10	1340	91.6	460	116	10,86
		360TY	SUM710006-4	P36G2702	④	T3C	50,906	S1	47.10	1500	91.2	460	122	10,87
Non-UL Listed, Non Hazardous Duty														
7 1/2	1800	210TY	SUM20754	P21G2750			5,361	S1	31.69	335	82.8	230	20.8	81
		210TY	SUM20754-4	P21G2754			5,361	S1	31.69	340	82.8	460	10.4	81
10	1800	210TY	SUM21004	P21G2755			6,434	S1	31.69	351	85.6	230	26	81
		210TY	SUM21004-4	P21G2756			6,434	S1	31.69	367	85.6	460	13	81
15	1800	210TY	SUM21504	P21G2752			8,104	S1	31.69	368	85.4	230	40.2	81
		210TY	SUM21504-4	P21G2757			8,104	S1	31.69	377	85.4	460	20.1	81

(a) See notes on inside back flap. ④ = Class I, Group C & D

Cast Iron Frame Red Catalog Number indicates NEW Product.

Longer cable lengths and custom submersible motors are available. Contact your Baldor•Reliance Sales Representative.